

S.D. 27

P.L. 2

WYOMING STATE MISCELLANEOUS LIBRARY

WYOMING STATE ARCHIVES

BIENNIAL REPORT
OF THE
TREASURER
OF THE
STATE OF WYOMING



For the Two Years Ending
September 30, 1930

W. H. Edelman, State Treasurer
Chas. B. Morgan, Deputy Treasurer

BIENNIAL REPORT
OF THE

TREASURER

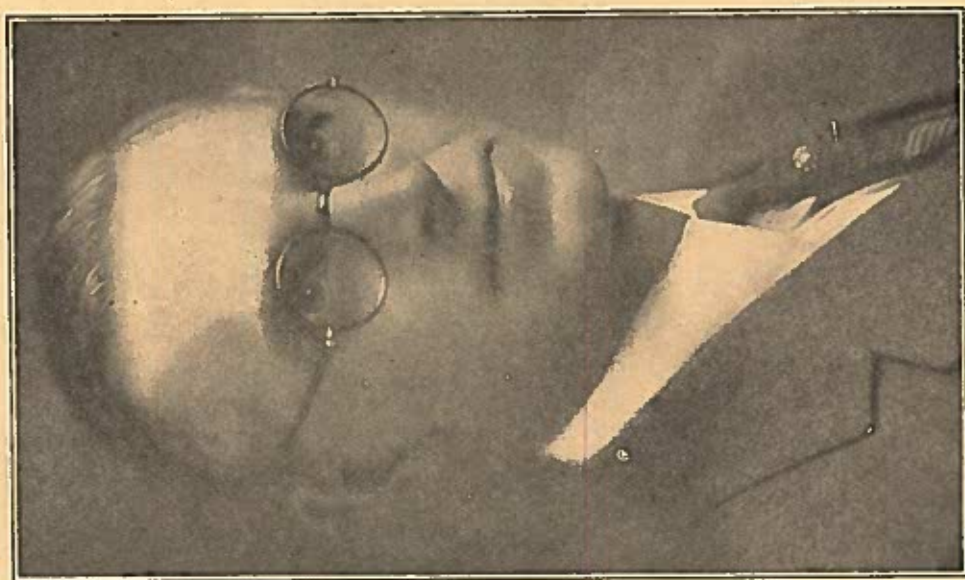
OF THE
STATE OF WYOMING



For the Two Years Ending
September 30, 1930

W. H. Edelman, State Treasurer
Chas. B. Morgan, Deputy Treasurer

THE MILLS COMPANY
Sheridan, Wyoming
1930



W. H. Edelman, State Treasurer

NOTE OF APPRECIATION

I desire to express my appreciation of the valuable assistance rendered by Mr. Chas. B. Morgan, who as Deputy Treasurer during my entire term has performed his duties with faithfulness and ability far in excess of the compensation he has received. I also desire to express my appreciation to Mr. Arthur Calverley for his assistance in the Workmen's Compensation Department and the manner in which he has conducted the affairs of the Department. I am most appreciative of the co-operation in conducting the work of the office of Treasurer to Olive M. Cole, Mildred L. Rice, Irene Gibbs, Frankleen Richardson, Mabel Knapp, Ada Cowley, Frank Horiskey, Augusta Bevans and Maribell Horton, to them all I extend my grateful thanks.

W. H. EDELMAN,
State Treasurer.

THE STATE OF WYOMING

OFFICE OF STATE TREASURER

To His Excellency,
Frank C. Emerson,
Governor of Wyoming.

Sir: In accordance with the provisions of Section 73 of the Compiled Statutes of 1920, I have the honor to transmit herewith, the biennial report of this department for the two years ending September 30, 1930.

Very truly yours,

W. H. EDELMAN,
State Treasurer.

Cheyenne, November 30, 1930.

NAMES OF THE TREASURERS OF THE TERRITORY AND STATE OF WYO-
MING FROM THE DATE OF ITS ORGANIZATION AS A
TERRITORY TO THE PRESENT TIME

NAME	Date of Appointment or Election	Date of Assuming Duties of Office	Date of Surrender of Office
John W. Donnellan	Dec. 21, 1869	Dec. 21, 1869	Oct. 25, 1872
Stephen W. Downey	Dec. 4, 1875	Dec. 11, 1875	Dec. 11, 1876
Amasa R. Warren	Sep. 22, 1876	Dec. 11, 1876	Sep. 30, 1876
Amasa R. Warren		Sep. 30, 1876	Dec. 15, 1877
Amasa R. Warren		Dec. 15, 1877	Dec. 10, 1879
Francis E. Warren		Dec. 10, 1879	Mar. 2, 1885
William P. Gannett	Mar. 2, 1883	Mar. 2, 1885	Mar. 31, 1889
Luke Voorhees	Mar. 13, 1883	Mar. 31, 1888	Nov. 7, 1895
Otto Gramm	Sep. 11, 1890	Nov. 7, 1890	Jan. 2, 1895
Henry C. Hay	Nov. 6, 1883	Jan. 2, 1895	Jan. 5, 1903
George E. Abbott	Nov. 8, 1895	Jan. 2, 1895	Jan. 5, 1903
Henry C. Hay	Nov. 4, 1903**	Jan. 5, 1903	*Sep. 19, 1903
William C. Irvine	Nov. 8, 1904***	Sep. 19, 1903	Jan. 7, 1907
Edward Gillette	Nov. 6, 1906	Jan. 7, 1907	Jan. 2, 1911
John L. Baird	Nov. 8, 1910	Jan. 2, 1911	Jan. 4, 1915
Herman B. Gates	Nov. 8, 1914	Jan. 4, 1915	Jan. 8, 1919
A. D. Hoakins	Nov. 5, 1915	Jan. 6, 1919	Jan. 1, 1923
J. M. Snyder	Nov. 7, 1922	Jan. 1, 1923	Jan. 8, 1927
W. H. Edelman	Nov. 2, 1926	Jan. 3, 1927	Jan. 5, 1931

* Resigned.
** Appointed to fill vacancy.
*** Elected.

TREASURY DEPARTMENT

W. H. Edelman.....State Treasurer
 Chas. B. Morgan.....Deputy State Treasurer
 Arthur W. Calverley.....Assistant Deputy State Treasurer
 Olive M. Cole.....Chief Clerk
 Mildred L. Rice.....Bookkeeper
 Irene Gibbs.....Stenographer
 Frankleen Richardson.....Farm Loan Clerk

REPORT OF THE STATE TREASURER

This report presents a detailed account of the receipts, disbursements, and balances in various funds and complete data relative to investments and other transactions of the State Treasury for the two years ending September 30, 1930.

The State had invested at the close of business September 30, 1930, for the benefit of the Permanent Land Funds a total of \$20,770,717.81 as against \$18,121,885.53 at the beginning of the biennium October 1, 1928, an increase during the past two years of \$2,648,832.68. At the beginning of the present administration the amount invested was \$14,816,623.68, an increase over the four year period of \$5,954,094.13.

The investment of the permanent funds of the State by the State Treasurer, with the approval of the Governor and Attorney General, has been given special and careful attention.

Interest on all investments is being paid fairly promptly with the exception of the Town of Manville, Town of Newcastle, Town of Cowley, Cowley Drainage District, Byron Drainage District, Big Bend Drainage District, Sunlight Drainage District and the Town of Lovell. The amounts due from the above are as follows:

Town of Manville	\$ 5,655.00
Town of Newcastle	5,790.00
Cowley Drainage District	31,050.00
Byron Drainage District	11,475.00
Big Bend Drainage District	3,600.00
Sunlight Drainage District	14,220.00
Town of Lovell	3,000.00
Town of Cowley	5,250.00

The collection on account of interest in the matter of the Town of Manville and the Town of Cowley is now in the hands of the Attorney General and we understand that judgment has been awarded the State.

There is on deposit in the banks of the State \$3,662,617.33; of this amount \$1,298,569.28 belongs to the several permanent land funds on which the present earnings are two per centum, per annum on daily balances. The earnings of these funds can be greatly increased if invested in the contemplated State Highway Bonds in the amount of \$2,800,000.00 with interest at the rate of five per centum per annum.

The increased earnings, providing that the entire bond issue is purchased out of these funds, will amount to \$84,000.00 per year. This increase will be of great financial assistance to our schools and State institutions as all of the earnings derived from the permanent funds are distributed for the maintenance of our schools and State institutions.

During the past two years \$110,000.00 of State Highway bonds were paid, being the balance outstanding of the issue of \$2,800,000.00 which was issued in July, 1919. There now remains \$1,790,000.00 of bonded indebtedness. A detailed statement is included in this report showing the total amount of bonds issued and amounts paid to September 30, 1930.

During the two year period the State Treasurer has collected \$2,591,669.43 on account of Gasoline Tax; of this amount \$2,056,012.61 has been credited to the State Highway Department and \$535,656.82 has been credited for the account of the several counties. The collection of gasoline tax for the two year period was accomplished at an expense of \$8,766.67; this amount includes refunds made to the United States. The licensing of retailers, requiring a small license fee of \$1.00 per annum and the bonding of wholesalers may well be considered.

It is my opinion that at this time it would be well to consider an amendment to the present law limiting bond issues to a period of twenty years and providing for their redemption serially. During my term of office I have assisted in financing and re-financing several bond issues for sub-divisions of this State, and I believe those who have accepted the serial redemption plan are well pleased with its operation. It not only reduces the principal, but the interest charged annually, thereby eliminating the sinking fund plan which is not at all satisfactory. Providing also that whenever the State, or its sub-divisions, including irrigation and drainage districts, propose a bond issue and call for election to vote on a bond issue, that a financial statement be published setting forth the total indebtedness of the State, County or sub-division to which the proposed bond issue is to apply. This information would, I believe, be most valuable to the tax payer.

At this time I wish to call attention to the Workmen's Compensation Department which has been placed on a good healthy financial basis; I would recommend that the service and policing charges be reduced fifty per cent. I believe that the Department can continue to serve employer and employee in a satisfactory manner with the reduction recommended.

I feel that I should call your attention to the tremendous responsibility connected with the Treasury Department. The Treasurer is charged not only with the safe-keeping and investment of the State Funds, but must also supervise the Workmen's Compensation Department, Gasoline Tax collections, State Game and Fish License collections; and a careful survey leads me to believe, and recommend, that the salaries of the State Treasurer and the Deputy should be increased.

In conclusion I would state for your information that during the past four years as State Treasurer it has been my duty to supervise the placing of fire insurance on the several State institutions under the control of the Board of Charities and Reform; this does not include the buildings of the State University, Capitol Building, Armories, Fish Hatcheries, or buildings and other property under the control of the State Highway Department. The premiums on property insured under the State Treasurer's supervision amount to the sum of \$7,689.58 per annum. Premiums paid by other Departments, not including the University, amount to approximately \$6,334.31, making a total of approximately \$14,023.89 for all premiums except as noted. I am offering this information for your consideration.

The following detailed statements show the financial transactions of the past two years and the condition of the Treasury at the present time.

Respectfully submitted,

W. H. EDELMAN,
State Treasurer.

Cheyenne, Wyoming, November 30, 1930.

REPORT OF STATE TREASURER

CASH STATEMENT

Cash Balance October 1, 1928 \$ 4,435,174.57
 Accrued from following sources:

State Tax	\$ 3,516,369.31
Tax of 1921	10,468.29
Tax of 1922	10,314.77
Tax of 1923	6,883.61
Tax of 1924	4,396.52
Tax of 1925	10,724.08
Tax of 1926	7,459.77
Tax of 1927	192,575.56
Tax of 1928	1,773,536.14
Tax of 1929	1,479,480.01
Int. on Delinquent State Tax	20,726.26
	\$ 3,516,369.31

Secretary of State	\$ 1,439,091.22
Corporation Fees	77,797.50
Certified Copies	923.30
Certificates and Seals	291.00
Corporation Laws	53.00
Statutes	630.00
Notaries Public	1,019.30
Blue Sky Fees	5,510.00
Extraditions	623.00
Miscellaneous	185.00
Commissioner of Deeds	2,284.50
Digests	5.00
Automobile Licenses	50.00
Sale of Auto by Sheriff	1,349,748.00
	\$ 1,439,091.22

Insurance Department	\$ 874,474.68
Insurance Fees	289,980.22
Inheritance Tax	84,494.46
	\$ 874,474.68

Land Department	\$ 3,139,682.32
Land Rentals	472,230.16
Land Sales	1,887,160.52
Interest on Deferred Payments	184,290.88
Commissioner's Fees	14,580.15
Arid Land Fund	5,338.25
Commissioners' Interest Account	3,238.15
Interest on repayment of Farm Loans	572,907.29
	\$ 3,139,682.32

Treasury Department	\$ 1,236,940.11
Interest on Deposits	139,186.45
Interest on Investments	1,097,753.66
	\$ 1,236,940.11

Workmen's Compensation Department	\$ 970,852.52
Industrial Accident General Fund	909,375.70
Catastrophe Insurance Fund	45,627.42
Wyoming Peace Officers' Fund	15,849.40
	\$ 970,852.52

Official Court Reporters	\$ 1,056.25
Fourth District	100.00
Fifth District	487.50
Sixth District	47.50
Seventh District	161.25
Ninth District	260.00
	\$ 1,056.25

REPORT OF STATE TREASURER

CASH STATEMENT—Continued

Big Horn Hot Springs Sanitary Fund	12,947.67
Board of Supplies Revolving Fund	886.51
State Boxing Commissioner	161,555.52
Car Company Tax	1,584.91
Chiropractic Examiner's Fund	59,478.83
Co-operative Vocational Rehabilitation Fund	8,098.64
Five per cent sale of U. S. Lands	7,712.99
Escheated Estates	1,520.00
Dairy Inspection Fund	1,710.00
Dental Fund	428.10
Dept. of Commerce and Industry	1,350.00
Embalming Fund	2,101.88
Entomologist Fund	12,905.60
Extirpation of Predatory Animal Fund	26,092.18
State Examiner's Fund	7,495.86
Express Company Tax	22,591.91
Fund for the Insane	263,893.70
Game and Fish Fund	588,665.82
Gasoline Tax—Counties	3,067.24
Gasoline Tax—Airports	49.15
Board of Control	56.70
Board of Contingent	256.76
Clerk of Supreme Court	2,322.70
Commissioner of Agriculture	2,170.00
Commissioner of Labor	306.25
State Coal Mine Examiner	605.00
Dairy, Food and Oil Commissioner	941.00
Department of Education	3,058.98
State Engineer—General Fund	1,488.70
Game Licenses—General Fund	43,674.48
Game Geologist	13.69
Pharmacy Commissioner	376.00
Interest on County Warrants	56.40
Chiropractic Examiner's Fund	133.99
Repayment from Game and Fish Commissioner	70,000.00
Girls' Industrial Institute	14,911.59
Government Royalty	2,234,574.18
State Highway—U. S. Treasurer	1,841,569.25
State Highway Fund—Miscellaneous Receipts	85,624.24
State Highway Fund—Motor Bus Fees	3,045.90
State Highway Fund—Gasoline Tax	2,066,012.61
State Highway Fund—Refund	40.00
State Historical Fund	142.00
State Home for Dependent Children	1,541.42
State Hospital Maintenance Fund	142,742.38
Inspection Fund	10,751.82
Maternal and Child's Hygiene Fund	5,600.00
Medical Fund	2,094.00
Nurses' Fund	1,710.00
Parity Maintenance Fund	95,245.88
Pharmacy Board Fund	2,226.00
Real Estate Fund	1,621.00
Sarawoa Hot Springs Fund	3,150.59
Ship Inspection Fund	2,569.54
State Registration Fund	5.00
State Training School Fund	12,518.63
Tubercular Sanatorium Fund	1,568.87
U. S. Forest Reserve	137,496.86
State University Fund—Agricultural College	282,339.47
State University Examiner's Fund	100,000.00
Veterinary Examiner's Fund	40.00
Wyo. Aeronautics Fund	88,873.62
Wyo. Industrial Institute Fund	37.00
Wyo. Mountain Association	77.22
Wyo. S. & S. Home Fund	8,203.41
Investments repaid	8,768,543.59
Total Receipts	\$27,264,624.39

Disbursements:	\$ 3,116,895.75
General Fund	34,740.02
Agricultural College Land Income Fund	1,705.84
Agricultural College Permanent Land Fund	11,067.52
Big Horn Hot Springs Sanitary Fund	1,066.00
State Bond Tax Fund	

REPORT OF STATE TREASURER

CASH STATEMENT—Continued

State Highway Bond Tax Fund	87,125.00
State Boxing Commissioner's Fund	656.89
Capitol Tax Fund	44.42
Car Company Tax Fund	128,424.26
Catastrophe Insurance Premium Fund	80,264.96
Chiropractic Examiner's Fund	1,011.84
Co-operative Vocational Education Fund	58,856.12
Co-operative Vocational Rehabilitation Fund	6,599.32
Common School Land Income Fund	2,042,405.77
Dairy Inspection Fund	20,254.47
D. D. & B. Land Income Fund	1,970.85
Dental Fund	13,803.43
Department of Commerce and Industry	240.83
Embalmers' Fund	41,114.63
Entomologist Fund	1,984.45
Eradication of Predatory Animal Fund	2,984.85
Erection of Public Bldgs. at Cap. Perm. Ld. Fd.	18,580.61
State Examiner's Fund	18,282.60
Express Company Tax Fund	38,862.88
State Fair Fund	7,692.88
State Farm Fund	1,493.31
Fish Hatchery Land Income Fund	9,951.71
Fund for the Insane	2,749.47
Game and Fish Fund	25,415.54
Gasoline Tax—Counties	269,665.95
Girls' Industrial Institute Fund	499,690.69
Government Royalty	24,183.93
State Highway Fund	1,441,232.53
W. G. Harris Fund	6,230,377.19
State Highway Bond Sinking Fund	560.00
State Historical Fund	110,000.00
State Home for Dependent Children	332.00
State Hospital Maintenance Fund	2,905.39
Hyatville Fish Hatchery Insurance Fund	141,048.50
Industrial Accident General Fund	1,674.08
Inheritance Tax Fund	818,321.56
Insane Asylum Land Income Fund	9,986.10
Inspection Fund	7,081.17
State Law Library Land Income Fund	20,883.93
State Law Library Perm. Land Fund	5,965.41
Maternal and Child Hygiene Fund	569.97
Medical Fund	873.74
Wm. H. Miller Fund	1,576.32
Miner's Hospital Land Income Fund	200.00
Miscellaneous Library Land Income Fund	6,666.71
Miscellaneous Library Perm. Land Fund	4,538.42
Normal School Fund	873.29
Nurses' Fund	52,000.00
Omnibus Land Income Fund	1,551.63
Permanent Omnibus Land Fund	78,966.29
P. R. or E. Land Income Fund	2,763.18
P. R. or E. Permanent Land Fund	4,787.48
Penitentiary Land Income Fund	400.00
Penitentiary Maintenance Fund	4,810.61
Pharmacy Board Fund	80,120.99
Poor Farm Land Income Fund	594.35
Public Bldgs. at Cap. Land Income Fund	2,694.59
Public Bldgs. at Cap. Perm. Land Fund	30,723.69
Real Estate Fund	2,468.42
Saratoga Hot Springs Fund	908.79
Sheep Inspection and Indemnity Fund	11,814.68
Stallion Registration Fund	884.86
Chas. Streator Fund	191.70
Emma R. Surgeon Fund	2,200.00
State Training School Maint. Fund	1,800.00
Tuberculosis Sanatorium Fund	11,734.20
U. S. Forest Reserve	1,544.29
State University Fund	137,496.38
University Bldg. Improvement Fund	901,219.41
University Equipment Land Fund	316,182.87
Vocational Training Maintenance Fund	14,420.16
Wyo. Industrial Institute Maint. Fund	11,487.25
Wyo. Industrial Institute—Reformatory	93,968.57
Wyo. Monitor Association	774.04
Wyo. National Guard Perm. Bldg. Fund	800.00
Wyo. Peace Officers' Indemnity Fund	63,861.60
Wyo. S. & S. Home Fund	3,612.08
	22,467.87

REPORT OF STATE TREASURER

CASH STATEMENT—Continued

Wyo. S. & S. Home Perm. Land Fund	2,614.93
Investments made of Permanent Funds	1,986,680.00
Investments made of State Warrants	2,810,186.87
Investments made of Farm Loans	1,919,900.00
Cash and in Banks September 30, 1930	3,662,617.33
	\$27,264,524.39
	\$27,264,524.39

SUMMARY OF CASH STATEMENT

Cash Balance October 1, 1928	\$ 4,435,174.57
Receipts:	
First year	9,271,879.32
Second year	9,788,928.91
Investments repaid	3,768,648.69
Disbursements:	
First year	8,231,698.60
Second year	8,952,837.59
Investments made	6,417,816.87
Cash and in Banks September 30, 1930	8,662,617.33
	\$27,264,524.39
	\$27,264,524.39

RECONCILEMENT OF TREASURER'S AND AUDITOR'S CASH ACCOUNT ON

SEPTEMBER 30, 1930	
Treasurer's Cash and in Banks	\$ 3,662,617.33
Investments and Securities held by State Treasurer	20,770,717.51
Auditor's charge to State Treasurer	23,657,744.21
State Warrants outstanding	775,589.93
	\$24,493,395.14
	\$24,493,395.14

TRUST FUNDS

(Not included in Cash Statement)	
(Sec. 2973, C. S. 1920)	
Balance October 1, 1928	\$
Amounts Received:	
Land Department	40,124.26
Farm Loan Department	20,664.66
Boeing Air Transport, Inc.	9,145.28
Deifelder Drainage District (Dividend No. 3 First State Bank, Riverton)	6,122.48
Disbursements	421.59
Balance September 30, 1930	\$ 76,478.24
	\$ 76,478.24

REPORT OF STATE TREASURER

STATEMENT OF INVESTMENTS

Amount invested October 1, 1928 \$19,121,855.53

Table listing investments since purchased, including School Dist. No. 1, Laramie County, Fourth Liberty Loan, U. S. A., Logan Drainage District, Johnson County, Big Horn County, State of Wyoming, Torrington Irrigation District, Town of Guernsey, Town of Worland, Town of Lander, School Dist. No. 1, Laramie County, North Bench Drainage District, School Dist. No. 7, Laramie County, City of Lander, School Dist. No. 16, Big Horn County, School Dist. No. 1, Laramie County, School Dist. No. 1, Albany County, School Dist. No. 3, Goshute County, School Dist. No. 1, Niobrara County, Elma Irrigation District, Fourth Liberty Loan, U. S. A., Town of Wheatland, Jackson-Wilson High School, School Dist. No. 5, Teton County, Big Horn County, School Dist. No. 1, Albany County, DeFelder Drainage District, Horse Creek Conservation District, School Dist. No. 18, Sweetwater County, Shoon Irrigation District, State Warrants, Farm Loans.

Table listing investments repaid, including Bond No. 1, School Dist. No. 1, Laramie County, Third Liberty Loan, U. S. A., Bonds Nos. 1 and 2, School Dist. No. 42, Big Horn Co., Bonds Nos. 1-25, School Dist. No. 8, Big Horn Co., Third Liberty Loan, U. S. A., Bond No. 1, School Dist. No. 12, Hot Springs Co., Bond No. 2, School Dist. No. 11, Hot Springs Co., Bonds Nos. 1-10, Platte Co., Bonds Nos. 1-10, School Dist. No. 8, Platte Co., Bonds Nos. 14-16, Town of Dayton, Bonds Nos. 71-75, School Dist. No. 7, Sheridan Co., Bond No. 9, School Dist. No. 7, Sheridan Co., Bond No. 4, School Dist. No. 21, Sheridan Co., Bonds Nos. 71-80, School Dist. No. 2, Natrona Co., Bonds Nos. 1-35, Fremont Co. High School, Bond No. 10, School Dist. No. 23, Fremont Co., Bonds Nos. 6-8, School Dist. No. 7, Laramie Co., Bond No. 7, School Dist. No. 10, Laramie Co., Bonds Nos. 1 and 2, Town of Deaver, Bonds Nos. 5-10, School Dist. No. 21, Sheridan Co., Lovell Drainage District and Park Counties, Bonds Nos. 56-55, Carbon Co. Memo. Hosp., Bonds Nos. 46-55, Hot Springs Co. High School, Bonds Nos. 114-125, Laramie County, Bond No. 9, School Dist. No. 1, Lincoln Co., Bond No. 11, School Dist. No. 4, Sheridan Co.

REPORT OF STATE TREASURER

STATEMENT OF INVESTMENTS—Continued

Table listing investments continued, including Bonds Nos. 10-12, School Dist. No. 7, Sheridan Co., Bonds Nos. 6-10, School Dist. No. 4, Platte Co., Bonds Nos. 1-11, School Dist. No. 41, Big Horn Co., Bond No. 4, School Dist. No. 1, Lincoln Co., Bond No. 12, School Dist. No. 1, Lincoln Co., Bond No. 11, School Dist. No. 18, Lincoln Co., Sunlight Drainage District, Bond No. 11, High School Dist. No. 1, Carbon Co., Bond No. 11, School Dist. No. 3, Laramie Co., Bond No. 2, School Dist. No. 8, Hot Springs Co., Bonds Nos. 1-50, Town of Glenrock, School Dist. No. 33, Sheridan Co., Bonds Nos. 18-24, Town of Greybull, Bonds Nos. 1-25, City of Cheyenne, Bond No. 9, School Dist. No. 8, Fremont Co., Bond No. 3, School Dist. No. 6, Lincoln Co., Bonds Nos. 3 and 4, School Dist. No. 1, Uinta Co., Bond No. 18, School Dist. No. 34, Sheridan Co., Bond No. 19, School Dist. No. 2, Natrona Co., Bond No. 14, School Dist. No. 2, Natrona Co., Bonds Nos. 43-48, School Dist. No. 2, Natrona Co., Bond No. 16, Natrona County High School, Bond No. 2, School Dist. No. 12, Hot Springs Co., Bonds Nos. 5 and 6, School Dist. No. 10, Converse Co., Lovell Drainage District, Bonds Nos. 1-4, School Dist. No. 4, Big Horn Co., Bonds Nos. 7 and 8, School Dist. No. 27, Carbon Co., Bond No. 2, School Dist. No. 1, Laramie Co., Bonds Nos. 111-116, School Dist. No. 1, Laramie Co., Bonds Nos. 1-10, School Dist. No. 1, Laramie Co., Bond No. 1, School Dist. No. 6, Washakie Co., Hanover Irrigation District, Bond No. 12, High School Dist. No. 1, Carbon Co., Bond No. 16, Town of Dayton, Bond No. 7, Town of Newcastle, Bond No. 11, Colter Drainage District, Bonds Nos. 11-12, School Dist. No. 5, Converse Co., Bonds Nos. 1-10, Town of Lander, Bond No. 15, School Dist. No. 2, Natrona Co., Bonds Nos. 49-54, School Dist. No. 2, Natrona Co., Bond No. 20, School Dist. No. 2, Natrona Co., Bond No. 17, Natrona Co. High School, Bonds Nos. 81-90, School Dist. No. 2, Natrona Co., Bond No. 8, School Dist. No. 10, Laramie Co., Bonds Nos. 9-12, School Dist. No. 7, Laramie County, Bonds Nos. 26-50, City of Cheyenne, Bond No. 11, School Dist. No. 23, Fremont Co., Bond No. 16, School Dist. No. 7, Sheridan Co., Bonds Nos. 78-80, School Dist. No. 7, Sheridan Co., Bond No. 1, School Dist. No. 7, Sheridan Co., Bond No. 3, School Dist. No. 49, Sheridan Co., Bond No. 1, School Dist. No. 11, Hot Springs Co., Sunlight Drainage District, Antelope Drainage District, Bonds Nos. 1-14, Crook County High School, Logan Drainage District, DeFelder Drainage District, Bonds Nos. 66-75, Carbon Co. Memo. Hospital, Bonds Nos. 1-20, School Dist. No. 1, Lincoln Co., Bond No. 10, School Dist. No. 4, Sweetwater Co., Bonds Nos. 13-15, School Dist. No. 7, Sheridan Co., Bond No. 12, School Dist. No. 6, Sheridan Co., Bonds Nos. 11-15, School Dist. No. 14, Platte Co., Bonds Nos. 1-3, School Dist. No. 7, Big Horn Co., Bonds Nos. 5-10, School Dist. No. 20, Big Horn Co., Bond No. 13, School Dist. No. 1, Lincoln Co., Bond No. 12, School Dist. No. 19, Lincoln Co., Bond No. 5, School Dist. No. 9, Platte Co., Bonds Nos. 1-5, School Dist. No. 1, Lincoln Co., Worland Bench Drainage District, Worland Drainage District, Hanover Irrigation District, Bond No. 12, School Dist. No. 3, Laramie Co.

REPORT OF STATE TREASURER

BONDS AND SECURITIES HELD SEPTEMBER 30, 1930—Continued

School District No. 12, Hot Springs County	4,000.00
School District No. 39, Sheridan County	1,000.00
School District No. 16, Carbon County	2,000.00
Town of Riverton	10,000.00
City of Evanston	5,000.00
City of Sheridan	3,000.00
City of Rock Springs	3,000.00
Town of Riverton	13,500.00
Town of Lovell	12,000.00
School District No. 10, Sheridan County	7,000.00
School District No. 8, Goshen County	35,000.00
School District No. 15, Big Horn County	11,000.00
School District No. 5, Teton County	5,000.00
For the Miscellaneous State Library Perm. Land Fund:	\$ 143,200.00
Town of Rochester	1,000.00
Town of Newcastle	2,000.00
Johnson County	16,000.00
Town of Guernsey	12,000.00
For the Agricultural College Permanent Land Fund:	\$ 31,000.00
School District No. 1, Uinta County	3,000.00
United States, First Liberty	15,000.00
United States, Fourth	35,000.00
School District No. 2, Natrona County	55,000.00
School District No. 3, Goshen County	30,000.00
School District No. 7, Sweetwater County	45,000.00
For the University Permanent Land Fund:	\$ 189,000.00
School District No. 1, Uinta County	10,000.00
United States, Fourth	115,000.00
Town of Newcastle	28,000.00
School District No. 1, Lincoln County	85,000.00
School District No. 2, Park County	20,000.00
United States, Fourth	20,000.00
School District No. 2, Goshen County	35,000.00
School District No. 7, Weston County	25,000.00
School District No. 2, Natrona County	55,000.00
School District No. 2, Park County	30,000.00
School District No. 11, Goshen County	40,000.00
School District No. 1, Lincoln County	112,500.00
School District No. 2, Goshen County	40,000.00
School District No. 8, Laramie County	20,000.00
Town of Pine Bluffs	14,000.00
School District No. 14, Platte County	14,000.00
City of Sheridan	20,000.00
School District No. 6, Carbon County	25,000.00
School District No. 25, Fremont County	25,000.00
Town of Gillette	45,000.00
Town of Douglas	50,000.00
United States, Fourth	41,000.00
City of Cheyenne	200,000.00
City of Laramie	65,000.00
City of Rawlins	25,000.00
City of Cheyenne	75,000.00
City of Sheridan	42,000.00
Town of Lander	15,000.00
City of Cheyenne	15,000.00
City of Cheyenne	50,000.00
School District No. 1, Albany County	250,000.00
School District No. 1, Niobrara County	20,000.00
United States, Fourth	23,000.00
School District No. 16, Crook County	28,000.00
School District No. 18, Sweetwater County	38,000.00
For the Permanent Omnibus St. Land Fund:	\$ 1,855,500.00
Town of Manville	14,500.00
Town of Newcastle	24,000.00
School District No. 20, Big Horn County	9,000.00
Town of Lovell	15,000.00
Big Horn County	25,000.00
Town of Lander	48,000.00
Town of Wheatland	15,000.00
Total	\$ 148,600.00

REPORT OF STATE TREASURER

BONDS AND SECURITIES HELD SEPTEMBER 30, 1930—Continued

For the F. R. or E. Inatna, Permanent Land Fund:	
Town of Wheatland	12,000.00
Town of Newcastle	32,000.00
United States, Fourth	300.00
School District No. 31, Fremont County	4,000.00
United States, Fourth	58.00
Town of Lovell	15,000.00
Total	\$ 68,750.00
For the Miners Hospital Permanent Land Fund:	
United States, Fourth	200.00
Town of Newcastle	2,000.00
Town of Lovell	3,000.00
City of Sheridan	63,000.00
Total	\$ 68,200.00
For the Erec. Pub. Bldgs. at Cap. Perm. Land Fund:	
Town of Newcastle	6,000.00
School District No. 38, Fremont County	2,000.00
United States, Fourth	500.00
United States, Panama Canal	5,000.00
School District No. 8, Goshen County	5,000.00
Total	\$ 18,500.00
For the Fish Hatchery Permanent Land Fund:	
Town of Newcastle	6,000.00
Total	\$ 6,000.00
For the Insane Asylum Permanent Land Fund:	
Town of Newcastle	4,000.00
United States, Fourth	600.00
Total	\$ 4,600.00
For the Penitentiary, Carbon County Perm. Land Fund:	
Town of Newcastle	19,000.00
Total	\$ 19,000.00
For the Industrial Accident Reserve Fund:	
United States, Fourth	250,000.00
Total	\$ 250,000.00
For the State Law Library Perm. Land Fund:	
United States, Fourth	900.00
Town of Lovell	12,000.00
School District No. 15, Big Horn County	28,000.00
Town of Guernsey	9,000.00
Total	\$ 49,900.00
For the Poor Farm, Fremont County Perm. Land Fund:	
United States, Fourth	350.00
Total	\$ 350.00
Total Bonds and Securities held September 30, 1930	\$20,770,717.81

REPORT OF STATE TREASURER

THE FOLLOWING STATEMENTS SHOW THE TRANSACTIONS AND BALANCES IN EACH FUND

THE GENERAL FUND

This fund arises mainly from the State Tax levied for general purposes, and is augmented by fees of State Officers, sales of revised statutes, session laws, general appropriations are paid from this fund.

Table with columns for description and amounts. Includes 'Accrued from following sources' and a list of various state funds and taxes such as State Tax of 1921, State Tax of 1922, State Tax of 1923, State Tax of 1924, State Tax of 1925, State Tax of 1926, State Tax of 1927, State Tax of 1928, State Tax of 1929, Interest on Delinquent State Tax, Interest on Deposits (General Accounts), Board of Control, Board of Condemnation, Bounty Contingent Court, Clerk of Supreme Court, Commissioner of Agriculture, Commissioner of Labor, Commissioner of Public Lands, State Coal Mine Examiner, Dairy, Food and Oil Commissioner, Department of Education, State Engineer, Game Licenses, State Geologist, Insurance Commissioner, Official Court Reporters, Pharmacy Board, Secretary of State, Secretary of State (Sale of Auto), Interest on County Warrants, Chiropractic Examiners, Repayment from Game and Fish Commissioner, Car Company Tax, Transferred from Express Company Tax, Transferred from Wheatland Armory, Transferred from Board of Supplies, Transferred from Bureau of Animal Industry, Transferred from Hot Springs Bridge Fund, Transferred from State Game Fund, Transferred from State Bond Tax Fund, Transferred from Arid Land Fund, Transferred from Dept. of Commerce and Industry, To correct error in Warrant No. 513830 which should have been charged to Game and Fish, Repayment from State Highway Fund, Interest on above, Transferred to State Warrants, Transferred to Emma R. Sturgeon Fund, Transferred to Girl's Industrial Institute Fund, Transferred to State Highway Fund, Disbursed by Auditor's Warrants, Balance September 30, 1930.

\$ 3,335,664.59 \$ 3,335,664.59

REPORT OF STATE TREASURER

ARID LAND FUND

Table with columns for description and amounts. Includes 'Balance October 1, 1928', 'Accrued from following sources', 'State and Fees', 'Transferred to General Fund', 'Balance September 30, 1930'.

BIG HORN HOT SPRINGS SANITARY FUND

Table with columns for description and amounts. Includes 'Balance October 1, 1928', 'Accrued from following sources', 'Rentals', 'Disbursed by Auditor's Warrants', 'Balance September 30, 1930'.

STATE BOND TAX FUND

Table with columns for description and amounts. Includes 'Balance October 1, 1928', 'Accrued from following sources', 'State Tax of 1921', 'State Tax of 1922', 'State Tax of 1923', 'State Tax of 1924', 'State Tax of 1925', 'State Tax of 1926', 'State Tax of 1927', 'Interest on Delinquent State Tax', 'Interest on Deposits', 'Payment of State Bonds and Interest', 'Public Building Bonds', 'Transferred to General Fund', 'Balance September 30, 1930'.

STATE HIGHWAY BOND TAX FUND

Table with columns for description and amounts. Includes 'Balance October 1, 1928', 'Accrued from following sources', 'State Tax of 1921', 'State Tax of 1922', 'State Tax of 1923', 'State Tax of 1924', 'State Tax of 1925', 'State Tax of 1926', 'State Tax of 1927', 'Interest on Delinquent State Tax', 'Interest on Deposits', 'Car Company Tax', 'Balance September 30, 1930'.

Interest coupons paid 191,500.00 Balance September 30, 1930 112,088.00 \$ 303,588.00 \$ 303,588.00

REPORT OF STATE TREASURER

BOARD OF SUPPLIES REVOLVING FUND

(Sec. 286, C. S. 1920)

Balance October 1, 1928..... \$ 4,674.77
 Accrued from following sources:
 Sale of Supplies to State Officers..... 8.00
 Interest on Deposits..... 20.76
 Transferred to General Fund..... 4,708.58
 \$ 4,708.53 \$ 4,708.53

STATE BOXING COMMISSIONER'S FUND

(Chap. 85, S. L. 1927)

Balance October 1, 1928..... \$ 186.04
 Accrued from following sources:
 Licenses and fees..... 886.51
 Interest on Deposits..... 10.82
 Disbursed by Auditor's Warrants..... 646.39
 Balance September 30, 1930..... 426.98
 \$ 1,083.37 \$ 1,083.37

BUREAU OF ANIMAL INDUSTRY FUND

(Sec. 3229, C. S. 1920)

Balance October 1, 1928..... \$ 4.46
 Transferred to General Fund..... 4.46
 \$ 4.46 \$ 4.46

CAPITOL TAX FUND

(Sec. 2940, C. S. 1920)

Balance October 1, 1928..... \$ 44.71
 Accrued from following sources:
 Interest on Deposits..... .50
 Disbursed by Auditor's Warrants..... 44.42
 Balance September 30, 1930..... .48
 \$ 44.91 \$ 44.91

CAPITOL IMPROVEMENT FUND

(Chap. 86, S. L. 1915)

Balance October 1, 1928..... \$ 1.50
 Balance September 30, 1930..... 1.50
 \$ 1.50 \$ 1.50

REPORT OF STATE TREASURER

CAR COMPANY TAX FUND

(Sec. 2818, C. S. 1920)

Balance October 1, 1928..... \$ 4,516.49
 Accrued from following sources:
 Tax upon Car Companies 1928..... 79,523.80
 Tax upon Car Companies 1929..... 82,032.22
 Interest on Deposits..... 1,763.45
 \$ 89,405.76

Credited to the following funds on account of State's proportion of the Tax:

General Fund..... 29,141.50
 University Bldg. Impr. Fund..... 1,276.87
 State University Fund..... 3,827.59
 Normal School Fund..... 781.49
 State Farm Fund..... 1,020.69
 State Nat'l Guard Perm. Bldg. Fund..... 850.24
 State Highway Bond Tax Fund..... 2,092.03
 Dept. of Commerce and Industry Fund..... 510.85
 \$ 39,400.76

Disbursed to County Treasurers by Auditor's Warrants under provisions of Chap. 140, S. L. 1919:

Albany County..... \$ 12,993.13
 Big Horn County..... 5,480.40
 Campbell County..... 850.12
 Carbon County..... 19,877.50
 Converse County..... 4,516.38
 Crook County..... 212.28
 Fremont County..... 8,993.80
 Goshute County..... 2,409.82
 Hot Springs County..... 1,720.32
 Johnson County..... 188
 Laramie County..... 22,687.35
 Lincoln County..... 5,907.07
 Natrona County..... 5,774.09
 Niobrara County..... 1,470.08
 Park County..... 1,199.45
 Platte County..... 8,897.44
 Sheridan County..... 1,171.83
 Sweetwater County..... 24,507.95
 Uinta County..... 16,919.70
 Washakie County..... 1,882.04
 Weston County..... 962.70
 \$ 128,424.28

Balance September 30, 1930..... \$ 1.42
 \$ 167,835.48 \$ 167,835.46

CATASTROPHE INSURANCE PREMIUM FUND

(Chap. 189, S. L. 1925)

Balance October 1, 1928..... \$ 46,618.74
 Accrued from following sources:
 Premiums..... 46,627.42
 Interest on Deposits..... 2,010.89
 \$ 94,257.05

Transferred to Wyo. Peace Officer's Fund to correct error in deposit..... 55.72

To correct error in Warrant No. 498040 charged to Industrial Accident Fund..... 1,085.10

Disbursed by Auditor's Warrants..... 30,204.96

Balance September 30, 1930..... 62,911.27

\$ 94,257.05 \$ 94,257.05

REPORT OF STATE TREASURER

CHIROPRACTIC EXAMINER'S FUND

(Chap. 25, S. L. 1929)

Accrued from following sources:	
License Fees	\$ 1,584.91
Interest on Deposits	15.71
Disbursed by Auditor's Warrants	1,011.84
Balance September 30, 1930	688.78
	\$ 1,600.62 \$ 1,600.62

CO-OPERATIVE VOCATIONAL EDUCATION FUND

(Sec. 2863 C. S. 1920)

Balance October 1, 1928	
Accrued from following sources:	
Treasurer of the United States	\$ 578.87
Interest on Deposits	59,478.83
To correct error—see Auditor's letter	312.56
	36.00
Disbursed by Auditor's Warrants	59,856.12
Balance September 30, 1930	2,049.84
	\$ 60,405.76 \$ 60,405.76

CO-OPERATIVE VOCATIONAL REHABILITATION FUND

(Chap. 109, S. L. 1921)

Balance October 1, 1928	
Accrued from following sources:	
Treasurer of the United States	\$ 2,567.29
Interest on Deposits	3,878.54
To correct error—see Auditor's letter	85.34
Disbursed by Auditor's Warrants	36.00
Balance September 30, 1930	6,529.35
	268.82
	\$ 6,831.17 \$ 6,831.17

COMMISSIONER OF PUBLIC LANDS—INTEREST ACCOUNT

Balance October 1, 1928	
Accrued from following sources:	
Interest on Deposits (Land Office)	\$ 36,680.73
Interest on Deposits (State Treasurer)	3,238.15
	1,474.99
Balance September 30, 1930	41,343.77
	\$ 41,343.77 \$ 41,343.77

DAIRY INSPECTION FUND

(Chap. 138, S. L. 1925)

Balance October 1, 1928	
Accrued from following sources:	
Agricultural Department	\$ 1,478.51
Interest on Deposits	1,520.00
Disbursed by Auditor's Warrants	28.55
Balance September 30, 1930	1,970.39
	1,067.67
	\$ 3,028.06 \$ 3,028.06

DENTAL FUND

(Sec. 3553, C. S. 1920)

Balance October 1, 1928	
Accrued from following sources:	
Board of Dental Examiners	\$ 188.04
Interest on Deposits	710.00
Disbursed by Auditor's Warrants	9.15
Balance September 30, 1930	240.86
	668.55
	\$ 907.19 \$ 907.19

REPORT OF STATE TREASURER

DEPARTMENT OF COMMERCE AND INDUSTRY FUND

(Chap. 120, S. L. 1927)

Accrued from following sources:	
State Tax of 1928	\$ 22,704.51
State Tax of 1929	19,475.55
Interest on Delinquent State Tax	67.88
Interest on Deposits	243.94
Car Company Tax	510.85
Miscellaneous receipts	328.10
Transferred to General Fund	154.25
Disbursed by Auditor's Warrants	41,114.66
Balance September 30, 1930	2,061.42
	\$ 43,330.33 \$ 43,330.33

DIVISION OF VENEREAL DISEASE FUND

Balance October 1, 1928	
Accrued from following sources:	
Interest on Deposits	\$ 38.10
Disbursed by Auditor's Warrants	1.46
Balance September 30, 1930	39.56
	\$ 39.56 \$ 39.56

EMBALMING FUND

(Sec. 3641, C. S. 1920)

Balance October 1, 1928	
Accrued from following sources:	
Board of Embalmers	\$ 527.98
Interest on Deposits	1,355.43
Disbursed by Auditor's Warrants	513.21
Balance September 30, 1930	1,395.64
	\$ 1,395.64 \$ 1,395.64

ENTOMOLOGIST FEES—DEPARTMENT OF AGRICULTURE

(Chap. 148, S. L. 1925)

Balance October 1, 1928	
Accrued from following sources:	
Agricultural Department	\$ 2,068.56
Interest on Deposits	2,101.88
Disbursed by Auditor's Warrants	52.94
Balance September 30, 1930	2,084.95
	2,138.53
	\$ 4,223.38 \$ 4,223.38

ERADICATION OF PREDATORY ANIMAL FUND

(Chap. 2, Sec. 3, S. L. 1921)

Balance October 1, 1928	
Accrued from following sources:	
Sale of furs, skins, etc.	\$ 14,855.86
Interest on Deposits	12,805.60
Disbursed by Auditor's Warrants	502.49
Balance September 30, 1930	19,559.61
	8,513.34
	\$ 28,193.95 \$ 28,193.95

REPORT OF STATE TREASURER

STATE EXAMINER'S FUND

(Chap. 155, S. L. 1925)

Balance October 1, 1928 \$ 25,337.55
Accrued from following sources:
State Examiner 26,082.18
Interest on Deposits 601.80
Disbursed by Auditor's Warrants 38,832.88
Balance September 30, 1930 18,185.65

\$ 52,021.53 \$ 52,021.53

EXPRESS COMPANY TAX FUND

(Chap. 178, S. L. 1920)

Balance October 1, 1928 \$ 5,211.17
Express Company Tax, 1928 5,257.30
Express Company Tax, 1929 5,338.56
Disbursed to General Fund 7,903.52
Disbursed by Auditor's Warrants 7,903.51

\$ 15,807.03 \$ 15,807.03

STATE FAIR FUND

(Sec. 825, C. S. 1920)

Balance October 1, 1928 \$ 3,490.50
Accrued from following sources:
Interest on Deposits 23.27
Disbursed by Auditor's Warrants 3,490.38
Balance September 30, 1930 23.80

\$ 3,503.77 \$ 3,503.77

STATE FAIR INSURANCE FUND

(Chap. 136, S. L. 1925)

Balance October 1, 1928 \$ 101.97
Accrued from following sources:
Interest on Deposits 101.97
Balance September 30, 1930 101.97

\$ 101.97 \$ 101.97

STATE FARM FUND

(Chap. 136, S. L. 1925)

Balance October 1, 1928 \$ 243.02
Accrued from following sources:
State Tax of 1923 296.14
State Tax of 1924 291.12
State Tax of 1925 4,498.08
State Tax of 1926 45,409.10
State Tax of 1927 85,951.08
Interest on Delinquent State Tax 341.40
Interest on Deposits 167.99
Car Company Tax 1,020.68
Disbursed by Auditor's Warrants 90,981.91
Balance September 30, 1930 239.53

\$ 91,221.44 \$ 91,221.44

FUND FOR THE INSANE

(Sec. 2938, C. S. 1920)

Balance October 1, 1928 \$ 10,418.45
Accrued from following sources:
Miscellaneous receipts 22,531.21
Interest on Deposits 232.81
Disbursed by Auditor's Warrants 25,745.54
Balance September 30, 1930 7,436.48

\$ 33,181.97 \$ 33,181.97

REPORT OF STATE TREASURER

GAME AND FISH FUND

(Chap. 107, S. L. 1927)

Balance October 1, 1928 \$ 39,298.83
Accrued from following sources:
Game Licenses 263,829.79
Interest on Deposits 916.55
Disbursed by Auditor's Warrants 30.37
Balance September 30, 1930 289,868.08

\$ 304,044.87 \$ 304,044.87

GOVERNMENT ROYALTY FUND

(Sec. 2, Chap. 51, S. L. 1921)

Balance October 1, 1928 \$ 619,766.97
Accrued from following sources:
United States Treasuries 845,316.41
Interest on State Highway Fund 200,206.52
Transferred to University Bldg. Impr. Fund 1,341,787.52
Disbursed by Auditor's Warrants to counties for Schools 67,765.79
Albany County 81,581.73
Big Horn County 47,789.86
Campbell County 67,729.30
Carbon County 47,250.99
Converse County 55,588.78
Crook County 43,312.71
Fremont County 91,727.57
Goshute County 30,483.57
Hot Springs County 25,776.60
Johnson County 117,068.14
Laramie County 53,159.27
Lincoln County 196,617.02
Natrona County 40,167.24
Niobrara County 39,071.59
Park County 72,024.28
Platte County 85,830.57
Sheridan County 18,814.82
Sublette County 78,752.23
Sweetwater County 8,446.24
Teton County 51,012.17
Utah County 25,869.99
Washakie County 41,894.26
Weston County

\$ 1,841,787.52

Disbursed by Auditor's Warrants to counties for roads

Albany County 490.01
Big Horn County 66.97
Campbell County 11.12
Carbon County 2,604.47
Converse County 306.24
Fremont County 664.69
Hot Springs County 3,099.46
Johnson County 49.11
Lincoln County 485.02
Natrona County 84,628.96
Niobrara County 1,198.01
Park County 2,162.79
Sheridan County 130.89
Sublette County 977.98
Sweetwater County 2,463.56
Utah County 8.45
Weston County 272.42
Washakie County .63

\$ 99,444.72

Balance September 30, 1930 \$ 363,226.30
\$ 2,849,961.47 \$ 2,849,961.47

REPORT OF STATE TREASURER

GASOLINE TAX—COUNTIES
(Chap. 139, S. L. 1929)

Accrued from following sources:	
Gasoline Tax	\$ 535,856.82
Interest on Deposits	1,273.88
Disbursed by Auditor's Warrants	409,690.60
Balance September 30, 1930	127,240.15
	\$ 536,930.75
	\$ 536,930.75

GASOLINE LICENSE TAX—AIR PORTS
(Chap. 14, Spl. S. L. 1929)

Accrued from following sources:	
Gasoline Tax	\$ 3,067.24
Interest on Deposits	13.09
Balance September 30, 1930	3,080.33
	\$ 3,080.33
	\$ 3,080.33

GIRLS' INDUSTRIAL INSTITUTE
(Chap. 113, S. L. 1925)

Balance October 1, 1928	\$ 16,959.57
Accrued from following sources:	
State Tax of 1925	185.33
State Tax of 1928	181.22
Interest on Delinquent State Tax	48.60
Miscellaneous Receipts	14,918.59
Interest on Deposits	338.38
Transferred from General Fund	10,899.41
Disbursed by Auditor's Warrants	24,188.08
Balance September 30, 1930	18,759.37
	\$ 42,922.40
	\$ 42,922.40

STATE HIGHWAY FUND
(Chap. 3034, C. S. 1920)

Balance October 1, 1928	\$ 176,219.26
Accrued from following sources:	
United States Treasurer	1,841,559.25
Miscellaneous Receipts	86,624.24
Motor Fuel Fees	3,045.00
Gasoline Tax	2,056,012.61
Motor Vehicle Licenses	1,849,748.00
Motor Vehicle Licenses Refund on account of forgery of Warrant No. 455759	40.00
Interest on Deposits	5,916.50
Transferred from Government Royalty	845,316.41
Transferred from General Fund	50,000.00
Repayment on above	266.65
Disbursed by Auditor's Warrants	6,233,877.10
Balance September 30, 1930	129,537.52
	\$ 6,413,451.27
	\$ 6,413,451.27

W. G. HARRIS FUND
(Chap. 99, S. L. 1925)

Balance October, 1928	\$ 850.00
Disbursed by Auditor's Warrants	850.00
	\$ 850.00
	\$ 850.00

REPORT OF STATE TREASURER

STATE HIGHWAY BOND SINKING FUND
(Sec. 8494, C. S. 1920)

Balance October 1, 1928	\$ 301,502.00
Accrued from following sources:	
Interest on Deposits	11,483.81
Highway Bonds Paid	110,000.00
Balance September 30, 1930	202,985.31
	\$ 312,985.31
	\$ 312,985.31

STATE HISTORICAL FUND
(Chap. 96, S. L. 1921)

Balance October 1, 1928	\$ 122.63
Accrued from following sources:	
Membership Dues	142.00
Interest on Deposits	2.15
Disbursed by Auditor's Warrants	132.00
Balance September 30, 1930	134.78
	\$ 266.78
	\$ 266.78

STATE HOME FOR DEPENDENT CHILDREN MAINTENANCE FUND
(Chap. 66, S. L. 1923)

Balance October 1, 1928	\$ 8,274.77
Accrued from following sources:	
Care of Children	1,541.42
Interest on Deposits	93.82
Disbursed by Auditor's Warrants	2,906.39
Balance September 30, 1930	2,004.12
	\$ 4,909.61
	\$ 4,909.61

STATE HOSPITAL MAINTENANCE FUND
(Sec. 2987, C. S. 1920)

Balance October 1, 1928	\$ 11,995.09
Accrued from following sources:	
Miscellaneous Receipts	142,742.38
Interest on Deposits	415.84
Disbursed by Auditor's Warrants	141,045.80
Balance September 30, 1930	14,104.51
	\$ 155,153.31
	\$ 155,153.31

HOT SPRINGS BRIDGE FUND
(Chap. 106, S. L. 1919)

Balance October 1, 1928	\$ 692.32
Accrued from following sources:	
Interest on Deposits	3.98
Transferred to General Fund	695.40
	\$ 695.40
	\$ 695.40

HYATTVILLE FISH HATCHERY INSURANCE FUND
(Chap. 12, S. L. 1925)

Balance October 1, 1928	\$ 1,839.06
Accrued from following sources:	
Interest on Deposits	17.90
Disbursed by Auditor's Warrants	1,674.06
Balance September 30, 1930	182.90
	\$ 1,856.96
	\$ 1,856.96

REPORT OF STATE TREASURER

INDUSTRIAL ACCIDENT GENERAL FUND

Balance October 1, 1928 (Chap. 258, Sec. 4331, C. S. 1920) \$ 110,695.15
 Accrued from following sources:
 Employers Assessment 909,216.11
 Refunds on County Warrants 42.84
 Interest on Deposits 117.95
 To correct error in Warrant No. 498040 which should have been charged to Catastrophe Ins. Premium Fund 6,946.69
 Transferred to Wyo. Peace Officers' Fund to correct error in deposit 1,085.10
 Transferred to Wyo. Peace Officers' Fund to correct error in deposit 6.87
 Checks returned unpaid 66.75
 Disbursed by Auditor's Warrants 399.55
 Balance September 30, 1930 817,922.80
 208,706.17
 \$ 1,027,101.64 \$ 1,027,101.64

INDUSTRIAL ACCIDENT RESERVE FUND

Balance October 1, 1928 (Sec. 4330, C. S. 1920) \$ 325,293.99
 Accrued from following sources:
 Interest on Deposits 9,253.35
 Interest on Investments 21,250.00
 Balance September 30, 1930 349,797.24
 \$ 349,797.24 \$ 349,797.24

INHERITANCE TAX FUND

Balance October 1, 1928 (Chap. 126, S. L. 1921) \$ 24,515.98
 Accrued from following sources:
 Tax upon Estates 84,494.46
 Interest on Deposits 781.31
 Transferred to General Fund 95,390.95
 Disbursed by Auditor's Warrants 9,986.10
 Balance September 30, 1930 14,415.05
 \$ 109,791.10 \$ 109,791.10

INSPECTION FUND

(Decision State Supreme Court Oct 2, 1893, Wyo. Report No. 4, Page 840)
 Balance October 1, 1928 \$ 50,037.41
 Accrued from following sources:
 Board of Livestock Commissioners 10,781.82
 Interest on Deposits 1,785.87
 Disbursed by Auditor's Warrants 20,833.93
 Balance September 30, 1930 41,751.17
 \$ 62,535.10 \$ 62,535.10

INTEREST ON DEPOSITS FUND

Accrued from following sources:
 Quarterly interest from Banks 139,168.94
 Transferred to various funds 17.51
 Balance September 30, 1930 139,186.45
 \$ 139,186.45 \$ 139,186.45

MATERNAL AND CHILD'S HYGIENE FUND

Balance October 1, 1928 (Chap. 32, S. L. 1923) \$ 3,280.34
 Accrued from following sources:
 United States Treasurer 5,590.00
 Interest on Deposits 34.40
 Disbursed by Auditor's Warrants 8,734.74
 \$ 8,734.74 \$ 8,734.74

REPORT OF STATE TREASURER

MEDICAL FUND

Balance October 1, 1928 (Sec. 3523, C. S. 1920) \$ 599.09
 Accrued from following sources:
 Board of Medical Examiners 2,094.00
 Interest on Deposits 28.37
 Disbursed by Auditor's Warrants 1,576.92
 Balance September 30, 1930 1,084.54
 \$ 2,661.46 \$ 2,661.46

WILLIAM H. MILLER FUND

Balance October 1, 1928 (Chap. 135, S. L. 1927) \$ 200.00
 Disbursed by Auditor's Warrants 200.00
 \$ 200.00 \$ 200.00

NORMAL SCHOOL FUND

Balance October 1, 1928 (Sec. 2427, C. S. 1920) \$ 25,320.94
 Accrued from following sources:
 State Tax of 1921 38.54
 State Tax of 1922 115.99
 State Tax of 1923 105.54
 State Tax of 1924 110.90
 State Tax of 1925 221.22
 State Tax of 1926 150.53
 State Tax of 1927 3,602.32
 State Tax of 1928 32,498.91
 State Tax of 1929 25,315.18
 Interest on Delinquent State Tax 387.21
 Car Company Tax 781.49
 Interest on Deposits 1,402.43
 Disbursed by Auditor's Warrants 52,000.00
 Balance September 30, 1930 44,270.73
 \$ 96,270.73 \$ 96,270.73

NURSES' FUND

Balance October 1, 1928 (Sec. 3579, C. S. 1920) \$ 652.23
 Accrued from following sources:
 Board of Nurse Examiners 1,710.09
 Interest on Deposits 28.77
 Disbursed by Auditor's Warrants 1,551.53
 Balance September 30, 1930 539.37
 \$ 2,391.00 \$ 2,391.00

PENITENTIARY MAINTENANCE FUND

Balance October 1, 1928 (Sec. 593, C. S. 1920) \$ 5,532.11
 Accrued from following sources:
 Penitentiary Earnings 98,245.33
 Interest on Deposits 713.63
 Disbursed by Auditor's Warrants 80,120.99
 Balance September 30, 1930 19,370.08
 \$ 99,491.07 \$ 99,491.07

PHARMACY BOARD FUND

Balance October 1, 1928 (Chap. 83, S. L. 1929) \$ 2,226.00
 Accrued from following sources:
 Pharmacy Board 19.70
 Interest on Deposits 591.85
 Disbursed by Auditor's Warrants 1,651.35
 Balance September 30, 1930 2,245.70
 \$ 2,245.70 \$ 2,245.70

REPORT OF STATE TREASURER

REAL ESTATE FUND

(Chap. 107, S. L. 1929)

Accrued from following sources:	
Real Estate Licenses	
Interest on Deposits	\$ 1,621.00
Disbursed by Auditor's Warrants	3.79
Balance September 30, 1930	908.79
	716.00
	<hr/>
	\$ 1,624.79 \$ 1,624.79

SARATOGA HOT SPRINGS FUND

(Chap. 162, Sec. 2, S. L. 1921)

Balance October 1, 1928	
Accrued from following sources:	
State Tax of 1921	
State Tax of 1922	
Interest on Delinquent State Tax	\$ 8,199.18
Miscellaneous Receipts	160.26
Interest on Deposits	210.12
Disbursed by Auditor's Warrants	59.46
Balance September 30, 1930	8,160.59
	206.11
	<hr/>
	\$ 11,814.68 \$ 11,975.02
	360.34

SHEEP INSPECTION AND INDEMNITY FUND

(Sec. 3203, C. S. 1920)

Balance October 1, 1928	
Accrued from following sources:	
Board of Sheep Commissioners	
Interest on Deposits	\$ 3,345.74
Disbursed by Auditor's Warrants	2,869.54
Balance September 30, 1930	140.28
	384.86
	<hr/>
	\$ 6,355.54 \$ 6,355.54
	5,470.63

STATE GAME FUND

(Chap. 91, Sec. 18, S. L. 1915)

Balance October 1, 1928	
Accrued from following sources:	
Interest on Deposits	\$ 1,674.37
Transferred to General Fund	7.46
	<hr/>
	\$ 1,681.81 \$ 1,681.81
	1,681.81

STALLION REGISTRATION FUND

(Sec. 323, C. S. 1920)

Balance October 1, 1928	
Accrued from following sources:	
State Veterinarian	\$ 485.97
Interest on Deposits	5.00
Disbursed by Auditor's Warrants	18.25
Balance September 30, 1930	191.70
	316.55
	<hr/>
	\$ 507.25 \$ 507.25

CHAS. STRESSNER FUND

(Chap. 134, S. L. 1927)

Balance October 1, 1928	
Disbursed by Auditor's Warrants	\$ 2,200.00
	<hr/>
	\$ 2,200.00 \$ 2,200.00
	2,200.00

REPORT OF STATE TREASURER

EMMA R. STURGEON FUND

Accrued from following sources:	
Transferred from General Fund	\$ 1,800.00
Disbursed by Auditor's Warrants	1,200.00
Balance September 30, 1930	3,000.00
	<hr/>
	\$ 3,000.00 \$ 3,000.00

STATE TRAINING SCHOOL MAINTENANCE FUND

(Chap. 67, S. L. 1923)

Balance October 1, 1928	
Accrued from following sources:	
Miscellaneous Receipts	
Interest on Deposits	
Disbursed by Auditor's Warrants	\$ 7,985.04
Balance September 30, 1930	11,734.20
	9,026.14
	<hr/>
	\$ 20,760.34 \$ 20,760.34

TUBERCULOSIS SANATORIUM FUND

(Chap. 112, S. L. 1923)

Balance October 1, 1928	
Accrued from following sources:	
State Tax of 1923	
State Tax of 1924	
Interest on Delinquent State Tax	\$ 219.85
Miscellaneous Receipts	195.23
Interest on Deposits	148.99
Checks returned unpaid	1,558.87
Disbursed by Auditor's Warrants	19.26
Balance September 30, 1930	320.50
	223.79
	<hr/>
	\$ 2,144.34 \$ 2,144.34
	1,600.05

UNITED STATES FOREST RESERVE FUND

(Sec. 187, C. S. 1920)

Accrued from following sources:	
Treasurer of the United States	\$ 48.57
Ashley Forest Reserve	22,618.82
Big Horn Forest Reserve	5,865.01
Black Hills Forest Reserve	149.23
Caribou Forest Reserve	8,122.48
Hayden Forest Reserve	33,646.36
Medicine Bow Forest Reserve	9,275.00
Shoshoni Forest Reserve	6,997.92
Targhee Forest Reserve	6,859.10
Teton Forest Reserve	21,605.52
Washakie Forest Reserve	22,315.40
Wyoming Forest Reserve	
	<hr/>
	\$ 137,496.36

Disbursed by Auditor's Warrants

Albany County	\$ 16,802.29
Big Horn County	7,708.52
Carbon County	24,966.50
Crook County	5,865.01
Freemont County	22,119.65
Hot Springs County	111.79
Johnson County	6,166.32
Lincoln County	10,497.22
Park County	9,827.77
Sheridan County	7,940.46
Sublette County	12,685.14
Teton County	11,960.60
Uinta County	48.57
Washakie County	798.52
	<hr/>
	\$ 137,496.36

REPORT OF STATE TREASURER

STATE UNIVERSITY FUND

(Chap. 48, S. L. 1921)

Table with financial entries for State University Fund, including Balance October 1, 1928, Accrued from following sources, and Balance September 30, 1930.

UNIVERSITY BUILDING IMPROVEMENT FUND

(Chap. 482, C. S. 1920)

Table with financial entries for University Building Improvement Fund, including Balance October 1, 1928, Accrued from following sources, and Balance September 30, 1930.

VETERINARY EXAMINER'S FUND

(Sec. 3815, C. S. 1920)

Table with financial entries for Veterinary Examiner's Fund, including Balance October 1, 1928, Accrued from following sources, and Balance September 30, 1930.

VOCATIONAL TRAINING MAINTENANCE FUND

(Chap. 110, S. L. 1921)

Table with financial entries for Vocational Training Maintenance Fund, including Balance October 1, 1928, Accrued from following sources, and Balance September 30, 1930.

REPORT OF STATE TREASURER

WHEATLAND ARMORY INSURANCE FUND

(Chap. 12, S. L. 1925)

Table with financial entries for Wheatland Armory Insurance Fund, including Balance October 1, 1928, Accrued from following sources, and Balance September 30, 1930.

WYOMING AERONAUTICS FUND

(Chap. 60, S. L. 1927)

Table with financial entries for Wyoming Aeronautics Fund, including Balance October 1, 1928, Accrued from following sources, and Balance September 30, 1930.

WYOMING INDUSTRIAL INSTITUTE MAINTENANCE FUND

(Sec. 627, C. S. 1920)

Table with financial entries for Wyoming Industrial Institute Maintenance Fund, including Balance October 1, 1928, Accrued from following sources, and Balance September 30, 1930.

WYOMING INDUSTRIAL INSTITUTE-REFORMATORY

(Chap. 101, S. L. 1921)

Table with financial entries for Wyoming Industrial Institute-Reformatory, including Balance October 1, 1928, Accrued from following sources, and Balance September 30, 1930.

WYOMING MONITOR ASSOCIATION FUND

(Chap. 60, S. L. 1927)

Table with financial entries for Wyoming Monitor Association Fund, including Balance October 1, 1928, Accrued from following sources, and Balance September 30, 1930.

WYOMING NATIONAL GUARD PERMANENT BUILDING FUND

(Chap. 60, S. L. 1927)

Table with financial entries for Wyoming National Guard Permanent Building Fund, including Balance October 1, 1928, Accrued from following sources, and Balance September 30, 1930.

REPORT OF STATE TREASURER

WYOMING PEACE OFFICERS' INDEMNITY FUND

(Chap. 97, Sec. 6, S. L. 1923)

Balance October 1, 1928	\$ 6,039.86
Accrued from following sources:	
Assessments on payrolls	15,849.40
Interest on Deposits	448.21
Transferred from Catastrophe Insurance Premium	55.72
Fund to correct error in Deposits	6.87
Transferred from Industrial Accident Fund to correct error in Deposit	66.75
Transferred from Industrial Accident Fund to correct error in Deposits	3,612.06
Disbursed by Auditor's Warrants	18,864.75
Balance September 30, 1930	\$ 22,466.81
	\$ 22,466.81

THE LAND FUNDS

The "Land Income Funds" here reported are funds arising from the rental of lands granted to the State in the Act of Admission for the several purposes indicated by the titles of the funds, together with interest received from the investment of said funds (See—Secs. 107, 736, 737 and 744, C. S. 1920).

AGRICULTURAL COLLEGE LAND INCOME FUND

(Sec. 489, C. S. 1920)

Balance October 1, 1928	\$ 1,069.21
Accrued from following sources:	
Land Rentals	11,576.36
Interest on Deferred Payments (Ld. Dept.)	4,661.60
Interest on Deposits (Income Fund)	87.27
Interest on Deposits (Perm. Fund)	3,701.97
Interest on Investments (Perm. Fd. of 1903)	410.64
Disbursed by Auditor's Warrants	34,749.92
Balance September 30, 1930	\$ 660.71
	\$ 86,310.63
	\$ 86,310.63

AGRICULTURAL COLLEGE PERMANENT LAND FUND

(Sec. 486, C. S. 1920)

Balance October 1, 1928	\$ 234,405.23
Accrued from following sources:	
Land Sales	22,067.95
Reimbursement of premium paid on bonds purchased	1,706.94
Premiums paid on bonds purchased	256,473.18
Balance September 30, 1930	\$ 258,179.12
	\$ 258,179.12
	\$ 258,179.12

AGRICULTURAL COLLEGE PERM. LAND FUND OF 1903

(Sec. 488, C. S. 1920)

Balance October 1, 1928	\$ 20,415.34
Balance September 30, 1930	\$ 20,415.34
	\$ 20,415.34
	\$ 20,415.34

STATE C. E. P. AND R. PERMANENT LAND FUND

(Sec. 2948, C. S. 1920)

Balance October 1, 1928	\$ 30,623.62
Transferred to Permanent Omnibus Ld. Fd.	\$ 30,623.62
	\$ 30,623.62
	\$ 30,623.62

REPORT OF STATE TREASURER

COMMON SCHOOL LAND INCOME FUND

(Chap. 74, S. L. 1921)

Balance October 1, 1928	\$ 487,576.47
Accrued from following sources:	
Land Rentals	891,771.86
Interest on Deferred Payments (Ld. Dept.)	180,018.61
Interest on Deposits (Income Fund)	11,466.74
Interest on Deposits (Perm. Fund)	18,971.82
Interest on Investments (Trust Funds)	628.91
Interest on State Warrants	874,726.20
Interest on Repayment of Farm Loans	89,888.91
To correct error in premium on bonds charged to Income Fund instead of Perm. Fd.	572,907.20
To correct error in credit to Perm. Fund which should have been Income Fund	4,746.96
Disbursed by Auditor's Warrants to County Treasurers for schools:	2,042,405.73
Albany County	\$ 199,182.77
Big Horn County	126,986.85
Campbell County	52,344.88
Carbon County	91,514.53
Converse County	86,566.16
Crook County	86,209.80
Fremont County	94,172.97
Goshute County	115,963.47
Hot Springs County	49,211.76
Johnson County	44,229.59
Laramie County	182,776.86
Lincoln County	139,846.00
Natrona County	204,276.71
Niobrara County	46,671.66
Park County	76,486.81
Platte County	91,988.47
Sheridan County	154,768.15
Sweetwater County	159,466.67
Sublette County	14,827.41
Teton County	17,894.19
Uinta County	66,066.11
Washakie County	42,194.75
Weston County	44,886.04
Balance September 30, 1930	\$ 2,042,405.73
	\$ 440,956.71
	\$ 2,483,262.44
	\$ 2,483,262.44

COMMON SCHOOL PERMANENT LAND FUND

(Sec. 5, Act of Admission)

Balance October 1, 1928	\$ 18,448,428.14
Accrued from following sources:	
Sale of School Lands	1,574,056.25
Five per cent sale of U. S. Lands	3,096.84
Reimbursement of premiums on bonds purchased	51,334.84
Escheated Estates	7,712.99
Premiums paid on bonds purchased	20,254.47
To correct error in premium on bonds charged to Income Fund instead of Permanent Fund	4,746.96
To correct error in credit to Permanent Fund which should have been Income Fund	708.67
Balance September 30, 1930	18,053,919.46
	\$ 18,079,629.56
	\$ 18,079,629.56

REPORT OF STATE TREASURER

DEAF, DUMB AND BLIND ASYLUM LAND INCOME FUND

(Sec. 2948, C. S. 1920)

Balance October 1, 1928	\$ 1,757.13
Accrued from following sources:	
Land Rentals	2,798.89
Interest on Deferred Payments (Ld. Dept.)	5,835.26
Interest on Deposits (Income Fund)	71.01
Interest on Deposits (Permanent Fund)	2,002.87
Interest on Investments (State Treasurer)	5,194.75
Disbursed by Auditor's Warrants	13,803.43
Balance September 30, 1930	2,856.12
	\$ 15,859.85
	\$ 15,859.85

DEAF, DUMB AND BLIND ASYLUM PERMANENT LAND FUND

(Sec. 2948, C. S. 1920)

Balance October 1, 1928	\$ 99,806.83
Accrued from following sources:	
Land Sales	10,094.91
Balance September 30, 1930	100,909.74
	\$ 100,909.74
	\$ 100,909.74

ERECTION OF PUBLIC BUILDINGS AT CAPITOL LAND INCOME FUND

(Sec. 3, Chap. 41, S. L. 1905)

Balance October 1, 1928	\$ 3,779.07
Accrued from following sources:	
Land Rentals	6,785.50
Interest on Deferred Payments (Ld. Dept.)	263.89
Interest on Deposits (Income Fund)	280.29
Interest on Deposits (Permanent Fund)	242.23
Interest on Investments (State Treasurer)	1,644.90
Balance September 30, 1930	13,015.98
	\$ 13,015.98
	\$ 13,015.98

ERECTION OF PUBLIC BUILDINGS AT CAPITOL PERMANENT LAND FUND

(Sec. 3, Chap. 41, S. L. 1905)

Balance October 1, 1928	\$ 23,234.86
Accrued from following sources:	
Land Sales	2,243.93
Reimbursement of premiums paid on bonds purchased	282.00
Premiums paid on bonds purchased	292.00
Balance September 30, 1930	25,475.84
	\$ 25,475.84
	\$ 25,760.84
	\$ 25,760.84

FISH HATCHERY LAND INCOME FUND

(Sec. 2948, C. S. 1920)

Balance October 1, 1928	\$ 796.21
Accrued from following sources:	
Land Rentals	334.70
Interest on Deferred Payments	573.54
Interest on Deposits (Income Fund)	33.96
Interest on Deposits (Permanent Fund)	600.56
Interest on Investments (State Treasurer)	906.00
Amount credited in error to Public Bldgs. at Capitol	180.00
Land Income Fund	2,449.47
Disbursed by Auditor's Warrants	988.50
Balance September 30, 1930	3,418.97
	\$ 3,418.97
	\$ 3,418.97

FISH HATCHERY PERMANENT LAND FUND

(Sec. 2948, C. S. 1920)

Balance October 1, 1928	\$ 21,812.22
Accrued from following sources:	
Land Sales	2,401.12
Balance September 30, 1930	24,213.34
	\$ 24,213.34
	\$ 24,213.34

REPORT OF STATE TREASURER

INSANE ASYLUM LAND INCOME FUND

(Sec. 2948, C. S. 1920)

Balance October 1, 1928	\$ 4,034.49
Accrued from following sources:	
Land Rentals	6,698.22
Interest on Deferred Payments	539.84
Interest on Deposits (Income Fund)	114.49
Interest on Deposits (Permanent Fund)	546.49
Interest on Investments (State Treasurer)	680.80
Disbursed by Auditor's Warrants	7,081.17
Balance September 30, 1930	5,168.16
	\$ 12,544.33
	\$ 12,544.33

INSANE ASYLUM PERMANENT LAND FUND

(Sec. 2948, C. S. 1920)

Balance October 1, 1928	\$ 18,814.50
Accrued from following sources:	
Land Sales	1,173.52
Balance September 30, 1930	19,988.02
	\$ 19,988.02
	\$ 19,988.02

STATE LAW LIBRARY LAND INCOME FUND

(Sec. 459, C. S. 1920)

Balance October 1, 1928	\$ 229.87
Accrued from following sources:	
Land Rentals	1,556.75
Interest on Deferred Payments	1,817.37
Interest on Deposits (Income Fund)	10.14
Interest on Deposits (Permanent Fund)	228.76
Interest on Deposits (Trust Funds)	2.83
Interest on Investments (State Treasurer)	2,312.76
Disbursed by Auditor's Warrants	5,968.41
Balance September 30, 1930	190.97
	\$ 6,153.48
	\$ 6,153.48

STATE LAW LIBRARY PERMANENT LAND FUND

(Sec. 459, C. S. 1920)

Balance October 1, 1928	\$ 50,862.81
Accrued from following sources:	
Land Sales	2,750.81
Reimbursement of premiums paid on bonds purchased	2,118.87
Premiums paid on bonds purchased	569.97
Balance September 30, 1930	54,661.82
	\$ 55,231.69
	\$ 55,231.69

MINER'S HOSPITAL LAND INCOME FUND

(Sec. 2948, C. S. 1920)

Balance October 1, 1928	\$ 4,174.44
Accrued from following sources:	
Land Rentals	1,886.10
Interest on Deferred Payments	5,947.41
Interest on Deposits (Income Fund)	1,275.59
Interest on Deposits (Permanent Fund)	1,432.53
Interest on Investments (State Treasurer)	5,589.33
Disbursed by Auditor's Warrants	6,556.71
Balance September 30, 1930	11,718.70
	\$ 18,373.41
	\$ 18,373.41

MINER'S HOSPITAL PERMANENT LAND FUND

(Sec. 2948, C. S. 1920)

Balance October 1, 1928	\$ 101,866.78
Accrued from following sources:	
Land Sales	11,875.86
Balance September 30, 1930	113,741.64
	\$ 113,741.64
	\$ 113,741.64

REPORT OF STATE TREASURER

MISCELLANEOUS LIBRARY LAND INCOME FUND

(Sec. 463, C. S. 1920)

Balance October 1, 1928	\$ 254.46
Accrued from following sources:	
Land Rentals	1,202.85
Interest on Deferred Payments	1,201.63
Interest on Deposits (Income Fund)	8.90
Interest on Deposits (Permanent Fund)	321.18
Interest on Deposits (Trust Funds)	1.41
Interest on Investments (State Treasurer)	4,838.42
Disbursed by Auditor's Warrants	178.62
Balance September 30, 1930	\$ 5,017.04

MISCELLANEOUS LIBRARY PERMANENT LAND FUND

Balance October 1, 1928	\$ 32,460.38
Accrued from following sources:	
Land Sales	3,480.83
Reimbursement of premium paid on bonds purchased	873.29
Premiums paid on bonds purchased	878.29
Balance September 30, 1930	\$ 35,940.71

OMNIBUS LAND INCOME FUND

(Sec. 702, C. S. 1920)

Balance October 1, 1928	\$ 52,610.30
Accrued from following sources:	
Land Rentals	17,282.26
Interest on Deferred Payments	18,620.98
Interest on Deposits (Income Fund)	844.18
Interest on Deposits (Permanent Fund)	8,995.58
Interest on Investments (State Treasurer)	9,425.12
Disbursed by Auditor's Warrants	73,969.29
Balance September 30, 1930	\$ 29,584.98

OMNIBUS LAND INCOME FUND—UNIVERSITY

Balance October 1, 1928	\$ 2,491.68
Accrued from following sources:	
Land Rentals	5,760.81
Interest on Deferred Payments	4,542.36
Interest on Deposits (Income Fund)	89.18
Interest on Deposits (Permanent Fund)	2,898.78
Interest on Investments (State Treasurer)	3,143.01
Transferred to State University Fund	17,171.44
Balance September 30, 1930	\$ 1,755.38

PERMANENT OMNIBUS STATE LAND FUND

Balance October 1, 1928	\$ 412,426.66
Accrued from following sources:	
Land Sales	48,212.41
Reimbursement of premiums paid on bonds purchased	2,763.18
Transfer from C. E. F. & R. Perm. Land Fund	30,623.62
Premiums paid on bonds purchased	2,763.18
Balance September 30, 1930	\$ 494,025.87

REPORT OF STATE TREASURER

PENAL, REFORM OR EDUCATIONAL INSTITUTIONS LAND INCOME FUND

(Sec. 2945, C. S. 1920)

Balance October 1, 1928	\$ 1,207.75
Accrued from following sources:	
Land Rentals	2,178.55
Interest on Deferred Payments	2,865.03
Interest on Deposits (Income Fund)	180.60
Interest on Deposits (Permanent Fund)	2,170.26
Interest on Investments (State Treasurer)	7,881.11
Disbursed by Auditor's Warrants	4,787.48
Balance September 30, 1930	\$ 11,660.82

PENAL, REFORM OR EDUCATIONAL INSTITUTIONS PERMANENT LAND FUND

Balance October 1, 1928	\$ 118,882.86
Accrued from following sources:	
Land Sales	400.00
Disbursed by Auditor's Warrants (Chap. 129, S. L. 1929)	127,788.13
Balance September 30, 1930	\$ 128,138.13

PENITENTIARY IN CARBON COUNTY LAND INCOME FUND

(Chap. 58, S. L. 1913)

Balance October 1, 1928	\$ 282.92
Accrued from following sources:	
Land Rentals	2,618.60
Interest on Deferred Payments	4,061.97
Interest on Deposits (Income Fund)	88.38
Interest on Deposits (Permanent Fund)	2,320.33
Interest on Investments (State Treasurer)	2,850.00
Disbursed by Auditor's Warrants	4,310.61
Balance September 30, 1930	\$ 7,921.59

PENITENTIARY IN CARBON COUNTY PERMANENT LAND FUND

Balance October 1, 1928	\$ 77,415.17
Accrued from following sources:	
Land Sales	84,479.82
Balance September 30, 1930	\$ 84,479.82

POOR FARM IN FREMONT COUNTY LAND INCOME FUND

(Sec. 4, Chap. 103, S. L. 1911 and Opinion of Attorney General Apr. 2, 1910)

Balance October 1, 1928	\$ 1,649.42
Accrued from following sources:	
Land Rentals	2,352.50
Interest on Deferred Payments	164.39
Interest on Deposits (Income Fund)	37.08
Interest on Deposits (Permanent Fund)	195.00
Interest on Investments (State Treasurer)	29.89
Disbursed by Auditor's Warrants	2,684.59
Balance September 30, 1930	\$ 1,736.60

POOR FARM IN FREMONT COUNTY PERMANENT LAND FUND

Balance October 1, 1928	\$ 5,360.86
Accrued from following sources:	
Land Sales	1,010.83
Balance September 30, 1930	\$ 6,371.19

REPORT OF STATE TREASURER

PUBLIC BUILDINGS AT CAPITOL LAND INCOME FUND

(Sec. 2948, C. S. 1920)

Balance October 1, 1928	\$	18,600.14
Accrued from following sources:		
Land Rentals		7,262.08
Interest on Deferred Payments		5,184.24
Interest on Deposits (Income Fund)		460.19
Interest on Deposits (Permanent Fund)		528.71
Interest on Investments (State Treasurer)		13,289.92
To correct amount which should have been credited to Fish Hatchery Land Income Fund		190.00
Disbursed by Auditor's Warrants		30,723.69
Balance September 30, 1930	\$	14,871.59
	\$	45,276.28
	\$	45,276.28

PUBLIC BUILDINGS AT CAPITOL PERMANENT LAND FUND

Balance October 1, 1928	\$	143,876.25
Accrued from following sources:		
Land Sales		14,258.87
Reimbursement of premiums paid on bonds purchased		2,456.42
Premiums paid on bonds purchased		167,637.12
Balance September 30, 1930	\$	160,096.54
	\$	160,096.54

UNIVERSITY LAND INCOME FUND

(Sec. 2948, C. S. 1920)

Balance October 1, 1928	\$	13,974.00
Accrued from following sources:		
Land Rentals		7,157.60
Interest on Deferred Payments		8,299.80
Interest on Deposits (Income Fund)		792.59
Interest on Deposits (Permanent Fund)		10,037.08
Interest on Investments (State Treasurer)		152,566.32
Interest on Deposits (Trust Funds)		6.03
Transferred to State University Fund		167,809.80
Balance September 30, 1930	\$	21,708.33
	\$	189,018.13
	\$	189,018.13

UNIVERSITY PERMANENT LAND FUND

Balance October 1, 1928	\$	1,848,508.85
Accrued from following sources:		
Land Sales		174,481.81
Reimbursement of premiums paid on bonds purchased		18,546.74
Premiums paid on bonds purchased		14,429.16
Balance September 30, 1930	\$	2,022,111.24
	\$	2,036,531.40
	\$	2,036,531.40

WYOMING SOLDIERS' AND SAILORS' HOME FUND

(Sec. 674, C. S. 1920)

Balance October 1, 1928	\$	6,342.52
Accrued from following sources:		
Land Rentals		3,099.03
Interest on Deferred Payments		1,546.76
Interest on Deposits (Income Fund)		201.66
Interest on Deposits (Permanent Fund)		1,089.39
Interest on Investments (State Treasurer)		6,431.78
United States Treasurer		8,860.00
Miscellaneous Receipts		4,843.41
Disbursed by Auditor's Warrants		22,487.97
Balance September 30, 1930	\$	4,856.48
	\$	27,314.40
	\$	27,314.40

REPORT OF STATE TREASURER

WYOMING SOLDIERS' AND SAILORS' PERMANENT LAND FUND

Balance October 1, 1928	\$	111,841.84
Accrued from following sources:		
Land Sales		2,670.95
Reimbursement of premiums paid on bonds purchased		3,255.81
Premiums paid on bonds purchased		2,614.83
Balance September 30, 1930	\$	116,168.77
	\$	117,768.60
	\$	117,768.60

STATEMENT SHOWING BALANCES IN CASH FUNDS AND DISTRIBUTION SEPTEMBER 30, 1930

Table listing various funds such as Agricultural College Land Income Fund, Agricultural College Permanent Land Fund, and their respective balances.

Table listing various funds such as Pub. Bldg. Cap. Ld. Inc. Fd., Real Estate Fund, and their respective balances.

DISTRIBUTION

Table listing various banks and institutions such as Cash, Investment Common Sch. Perm. Ld. Fd., and their respective balances.

NOTE: The interest coupons of the "State Highway" bonds, second issue, are by their terms payable at the National City Bank, New York, or at the office of the State Treasurer of the State of Wyoming, Cheyenne, Wyoming, at the option of the holder.

Purposes for Which Bonds Were Issued	Int. Rate	Annual Int. Amount	Amount Issued	Amount Outstanding Sept. 30, 1930	When Payable
State Highway	5%	Mar. & Sept.	\$1,800,000.00	\$1,790,000.00	Optional ten years after date.
Total			\$1,800,000.00	\$1,790,000.00	

STATEMENT OF THE BONDED DEBT OF THE STATE OF WYOMING

First National Bank, Lander	40,000.00
Lander State Bank, Lander	50,000.00
Stockgrowers State Bank, Lander	20,000.00
Albany National Bank, Laramie	104,500.00
First National Bank, Laramie	80,000.00
First State Bank, Laramie	60,000.00
First National Bank, Lovell	25,000.00
State Bank of Lovell, Lovell	46,150.00
First State Bank, Lusk	35,000.00
Medicine Bow State Bank, Medicine Bow	10,000.00
First National Bank, Meeteetse	10,000.00
Union County State Bank, Mountain View	4,500.00
First State Bank, Newcastle	18,500.00
National City Bank, N. Y.	375.00
Parco State Bank, Parco	10,000.00
Farmers State Bank, Pine Bluffs	30,000.00
State Bank of Pinedale, Pinedale	5,000.00
First National Bank, Powell	20,000.00
Park County Bank, Powell	4,500.00
Rawlins National Bank, Rawlins	83,000.00
First National Bank, Riverton	125,000.00
Riverton State Bank, Riverton	19,000.00
First Security Bank of Rock Springs	60,000.00
Rock Springs National Bank, Rock Springs	19,000.00
North Side State Bank, Rock Springs	140,000.00
Saratoga State Bank, Saratoga	18,000.00
First National Bank, Sheridan	17,500.00
Bank of Commerce, Sheridan	75,000.00
Sheridan Trust & Savings Bank, Sheridan	125,000.00
Sundance State Bank, Sundance	50,000.00
First Bank of Superior, Superior	15,000.00
Miners State Bank, South Superior	4,000.00
First National Bank, Thermopolis	10,000.00
Wyoming Trust Company, Thermopolis	42,000.00
Citizens National Bank, Torrington	25,000.00
Goshen County Bank, Torrington	10,000.00
State Bank of Wheatland, Wheatland	20,000.00
Stockgrowers Bank, Wheatland	10,000.00
Stockgrowers State Bank, Worland	25,000.00
Farmers State Bank, Worland	25,500.00
Security State Bank, Yoder	6,000.00
Security State Bank, Basin	10,000.00
Total	\$24,433,335.14

STATEMENT OF TAX LEVY FOR THE YEAR 1930

County	Valuation	General Fund (2.8 Mills)	Univ. Bids (1.25 Mills)	Univ. Maint. (375 Mills)	Normal School Training (.0675 Mills)	State Normal Farm (.1 Mills)	W. N. G. Armories (0.883 Mills)	Highway Bond and Interest (1.06 Mills)	Com. & Industry Dept. (3.988 Mills)	Total (8.988 Mills)
Albany	\$26,995,298.00	\$75,885.00	\$2,885.00	\$10,080.00	\$1,547.00	\$2,691.00	\$2,241.00	\$2,771.00	\$1,845.00	\$99,883.00
Big Horn	18,774,482.00	88,689.00	1,722.00	6,165.00	740.00	1,377.00	1,147.00	1,839.00	699.00	47,880.00
Campbell	50,929,088.00	86,801.00	3,866.00	11,898.00	1,779.00	3,092.00	2,676.00	1,547.00	114,246.00	88,088.00
Carbon	23,846,986.00	66,769.00	2,981.00	3,942.00	1,372.00	1,091.00	1,086.00	1,192.00	88,088.00	88,088.00
Converse	10,013,340.00	29,037.00	1,252.00	3,765.00	907.00	1,001.00	1,031.00	894.00	88,088.00	88,088.00
Crook	15,782,394.00	44,191.00	1,978.00	5,918.00	907.00	1,001.00	1,031.00	894.00	88,088.00	88,088.00
Fronton	17,488,854.00	49,981.00	2,187.00	6,560.00	1,006.00	1,031.00	1,031.00	894.00	88,088.00	88,088.00
Goehon	11,418,224.00	31,962.00	1,427.00	4,281.00	666.00	1,031.00	1,031.00	894.00	88,088.00	88,088.00
Hot Springs	11,418,224.00	31,962.00	1,427.00	4,281.00	666.00	1,031.00	1,031.00	894.00	88,088.00	88,088.00
Johnson	10,683,443.00	29,678.00	1,321.00	3,961.00	666.00	1,031.00	1,031.00	894.00	88,088.00	88,088.00
Laramie	36,817,687.00	100,289.00	4,477.00	18,432.00	2,060.00	3,682.00	2,983.00	1,791.00	132,303.00	132,303.00
Lincoln	17,361,168.00	49,611.00	2,170.00	6,511.00	999.00	1,031.00	1,031.00	894.00	88,088.00	88,088.00
Natrona	60,846,370.00	170,870.00	7,608.00	22,817.00	3,499.00	6,068.00	6,068.00	3,042.00	224,754.00	224,754.00
Niobrara	9,576,577.00	26,814.00	1,197.00	3,691.00	561.00	988.00	988.00	479.00	88,088.00	88,088.00
Park	15,018,718.00	42,052.00	1,877.00	5,632.00	864.00	1,031.00	1,031.00	894.00	88,088.00	88,088.00
Shelburne	15,800,822.00	44,241.00	1,976.00	5,925.00	909.00	1,031.00	1,031.00	894.00	88,088.00	88,088.00
Sublette	27,560,866.00	77,171.00	3,446.00	10,336.00	1,888.00	2,766.00	2,296.00	1,378.00	101,808.00	101,808.00
Sweetwater	41,898,724.00	116,224.00	5,180.00	15,566.00	2,387.00	4,151.00	3,458.00	2,075.00	158,825.00	158,825.00
Teton	2,262,993.00	5,386.00	233.00	849.00	130.00	222.00	189.00	113.00	88,088.00	88,088.00
Union	14,861,664.00	40,213.00	1,795.00	5,386.00	826.00	1,436.00	1,196.00	718.00	68,049.00	68,049.00
Washington	7,747,911.00	21,694.00	969.00	2,908.00	446.00	775.00	646.00	387.00	28,619.00	28,619.00
Western	9,417,197.00	26,868.00	1,177.00	3,631.00	542.00	942.00	784.00	471.00	34,785.00	34,785.00

STATEMENT OF TAX LEVY FOR THE YEAR 1929

County	Valuation	General Fund (2.8 Mills)	Univ. Bids (1.25 Mills)	Univ. Maint. (375 Mills)	Normal School Training (.0675 Mills)	State Normal Farm (.1 Mills)	W. N. G. Armories (0.883 Mills)	Highway Bond and Interest (1.06 Mills)	Com. & Industry Dept. (3.988 Mills)	Total (8.988 Mills)
Albany	\$27,710,819.00	\$77,689.00	\$2,844.00	\$10,392.00	\$1,801.00	\$2,771.00	\$2,308.00	\$2,642.00	\$1,885.00	\$105,222.00
Big Horn	14,888,389.00	40,791.00	1,612.00	4,856.00	888.00	1,244.00	1,078.00	2,814.00	728.00	66,386.00
Campbell	51,866,944.00	89,227.00	3,983.00	11,950.00	2,071.00	3,187.00	2,655.00	1,694.00	121,040.00	121,040.00
Carbon	24,287,054.00	68,022.00	3,037.00	9,111.00	1,519.00	2,430.00	2,024.00	1,216.00	82,288.00	82,288.00
Converse	10,089,822.00	28,252.00	1,261.00	3,784.00	966.00	1,009.00	1,009.00	604.00	88,088.00	88,088.00
Crook	16,699,822.00	46,760.00	2,087.00	6,262.00	1,066.00	1,670.00	1,391.00	834.00	88,088.00	88,088.00
Fronton	17,444,721.00	49,406.00	2,206.00	6,618.00	1,147.00	1,764.00	1,470.00	852.00	88,088.00	88,088.00
Goehon	11,737,068.00	32,964.00	1,467.00	4,401.00	768.00	1,174.00	978.00	587.00	44,681.00	44,681.00
Hot Springs	10,844,488.00	30,366.00	1,366.00	4,068.00	706.00	1,084.00	903.00	642.00	88,088.00	88,088.00
Johnson	17,908,412.00	50,130.00	2,288.00	6,713.00	1,144.00	1,790.00	1,491.00	896.00	88,088.00	88,088.00
Laramie	66,662,236.00	186,654.00	5,833.00	17,180.00	4,333.00	6,667.00	5,633.00	3,883.00	258,203.00	258,203.00
Natrona	17,908,412.00	50,130.00	2,288.00	6,713.00	1,144.00	1,790.00	1,491.00	896.00	88,088.00	88,088.00
Niobrara	9,576,140.00	27,983.00	1,247.00	3,741.00	649.00	987.00	1,986.00	1,031.00	88,088.00	88,088.00
Park	14,884,890.00	41,620.00	1,588.00	4,674.00	869.00	1,466.00	1,289.00	744.00	66,460.00	66,460.00
Shelburne	28,726,679.00	80,466.00	3,671.00	10,778.00	1,867.00	2,873.00	2,393.00	1,488.00	109,118.00	109,118.00
Sublette	16,914,282.90	46,560.00	1,976.00	5,789.00	844.00	1,133.00	936.00	296.00	22,444.00	22,444.00
Sweetwater	40,040,520.00	112,114.00	4,006.00	16,048.00	2,668.00	4,004.00	3,385.00	2,002.00	152,086.00	152,086.00
Teton	2,568,179.00	7,191.00	321.00	963.00	167.00	257.00	214.00	128.00	9,766.00	9,766.00
Union	13,778,616.00	38,866.00	1,722.00	5,166.00	866.00	1,377.00	1,147.00	689.00	62,816.00	62,816.00
Washington	7,987,899.00	22,866.00	995.00	2,994.00	619.00	789.00	669.00	400.00	30,888.00	30,888.00
Western	9,860,203.00	26,209.00	1,170.00	3,610.00	608.00	936.00	780.00	463.00	35,658.00	35,658.00

STATEMENT OF APPROPRIATIONS FOR THE TWO YEARS ENDING
SEPTEMBER 30, 1930

ADJUTANT GENERAL SALARY:			
Balance September 30, 1928	\$ 5,750.00	\$ 2,250.00	\$ 6,000.00
Appropriated 1929	2,500.00		
Disbursed			
Balance September 30, 1930	\$ 8,250.00	\$ 8,250.00	
ADJUTANT GENERAL CONTINGENT:			
Balance September 30, 1928	\$ 4,200.04	\$ 4,200.04	\$ 9,400.00
Appropriated 1929	8,227.96		
Disbursed	4,772.00		
Balance September 30, 1930	\$ 13,600.04	\$ 13,600.04	
AGRICULTURAL SHOWS CONTINGENT:			
Appropriated 1929	\$ 8,500.00	\$ 8,500.00	
Disbursed	3,327.49		
Balance September 30, 1930	\$ 4,872.51		
AMERICANIZATION CONTINGENT:			
Balance September 30, 1928	\$ 8,201.43	\$ 8,201.43	\$ 5,000.00
Appropriated			
Disbursed	3,514.28		
Balance September 30, 1930	\$ 4,687.15		
ANNUAL CONFERENCE ON UNIFORM STATE LAWS:			
Balance September 30, 1928	\$ 100.00	\$ 100.00	\$ 100.00
Appropriated			
Disbursed			
Balance September 30, 1930	\$ 100.00	\$ 100.00	
ARID LAND CONTINGENT:			
Appropriated	\$ 12,000.00	\$ 12,000.00	
Disbursed	6,530.62		
Balance September 30, 1930	\$ 5,469.38		
ASSISTANT ATTORNEY GENERALS' SALARIES:			
Balance September 30, 1928	\$ 2,212.52	\$ 2,212.52	\$ 11,500.00
Appropriated			
Disbursed	9,085.92		
Balance September 30, 1930	\$ 4,316.60		
SPECIAL ASSISTANT ATTORNEY GENERAL'S SALARY:			
Balance September 30, 1928	\$ 2,212.52	\$ 2,212.52	\$ 14,012.52
Appropriated			
Disbursed			
Balance September 30, 1930	\$ 2,212.52	\$ 2,212.52	
ASSISTANT BUDGET OFFICER'S SALARY AND CONTINGENT:			
Balance September 30, 1928	\$ 5,395.14	\$ 5,395.14	\$ 4,000.00
Appropriated			
Disbursed			
Balance September 30, 1930	\$ 5,395.14	\$ 5,395.14	
ASSISTANT BUDGET OFFICER'S SALARY:			
Appropriated 1929	\$ 833.83	\$ 833.83	\$ 4,000.00
Disbursed	3,666.67		
Balance September 30, 1930	\$ 4,000.00	\$ 4,000.00	

ASSISTANT BUDGET OFFICER'S CONTINGENT:			
Appropriated 1929	\$ 42.00	\$ 2,500.00	\$ 2,500.00
Disbursed	2,458.00		
Balance September 30, 1930	\$ 2,500.00	\$ 2,500.00	
ASSISTANT CHEMISTS' SALARIES:			
Balance September 30, 1928	\$ 3,031.86	\$ 3,031.86	\$ 7,800.00
Appropriated	7,581.86		
Disbursed	3,250.00		
Balance September 30, 1930	\$ 10,363.72	\$ 10,363.72	
ASSISTANT COMMISSIONER CHILD AND ANIMAL PROTECTION SALARY:			
Balance September 30, 1928	\$ 3,600.00	\$ 3,600.00	\$ 3,600.00
Appropriated			
Disbursed			
Balance September 30, 1930	\$ 3,600.00	\$ 3,600.00	
ASSISTANT ENGINEER'S SALARY:			
Balance September 30, 1928	\$ 1,800.00	\$ 1,800.00	\$ 1,800.00
Appropriated			
Disbursed			
Balance September 30, 1930	\$ 1,800.00	\$ 1,800.00	
FIRST ASSISTANT ENGINEER'S SALARY:			
Appropriated 1929	\$ 3,150.00	\$ 3,150.00	\$ 5,400.00
Disbursed	2,250.00		
Balance September 30, 1930	\$ 5,100.00	\$ 5,100.00	
SECOND ASSISTANT ENGINEER'S SALARY:			
Appropriated 1929	\$ 2,786.65	\$ 2,786.65	\$ 4,800.00
Disbursed	2,013.35		
Balance September 30, 1930	\$ 4,800.00	\$ 4,800.00	
ASSISTANT EXAMINERS' SALARIES:			
Appropriated 1929	\$ 20,861.70	\$ 20,861.70	\$ 30,000.00
Disbursed	9,198.30		
Balance September 30, 1930	\$ 30,000.00	\$ 30,000.00	
ASSISTANT FARM LOAN COMMISSIONER'S SALARY:			
Appropriated 1929	\$ 8,860.00	\$ 8,860.00	\$ 6,600.00
Disbursed	2,750.00		
Balance September 30, 1930	\$ 6,600.00	\$ 6,600.00	
ATTORNEY GENERAL'S SALARY:			
Balance September 30, 1928	\$ 3,600.00	\$ 3,600.00	\$ 9,600.00
Appropriated 1929			
Disbursed	9,200.00		
Balance September 30, 1930	\$ 4,000.00	\$ 4,000.00	
ATTORNEY GENERAL'S CONTINGENT:			
Balance September 30, 1928	\$ 14,166.23	\$ 14,166.23	\$ 23,079.97
Appropriated 1929	8,311.72		
Disbursed			
Balance September 30, 1930	\$ 23,079.97	\$ 23,079.97	
AUDITOR'S SALARY:			
Balance September 30, 1928	\$ 3,000.00	\$ 3,000.00	\$ 8,000.00
Appropriated 1929	7,666.66		
Disbursed	3,333.32		
Balance September 30, 1930	\$ 11,000.00	\$ 11,000.00	

AUDITOR'S CONTINGENT:			
Balance September 30, 1928	\$	8,607.16	\$
Appropriated 1929		17,479.83	
Disbursed		10,060.33	
Balance September 30, 1930	\$	28,140.16	\$
BAILIFF SUPREME COURT SALARY:			
Balance September 30, 1928	\$	675.00	\$
Appropriated 1929		1,800.00	
Disbursed		1,725.00	
Balance September 30, 1930	\$	750.00	\$
BEE INSPECTOR CONTINGENT:			
Balance September 30, 1928	\$	2,475.00	\$
Appropriated 1929		1,795.68	
Disbursed		15,000.00	
Balance September 30, 1930	\$	10,904.51	\$
BIG HORN HOT SPRINGS ADVERTISING CONTINGENT:			
Balance September 30, 1928	\$	16,795.68	\$
Appropriated 1929		5,647.56	
Disbursed		1,852.44	
Balance September 30, 1930	\$	7,500.00	\$
BIG HORN HOT SPRINGS RESERVE CONTINGENT:			
Balance September 30, 1928	\$	14.88	\$
Appropriated 1929		33,000.00	
Disbursed		24,248.35	
Balance September 30, 1930	\$	8,766.54	\$
BIG HORN HOT SPRINGS RESERVE NEW PARKS AND ADDITIONS:			
Balance September 30, 1928	\$	33,014.89	\$
Appropriated 1929		2,832.67	
Disbursed		616.38	
Balance September 30, 1930	\$	3,000.00	\$
BIG HORN HOT SPRINGS RESERVE STRUCTURES CONTINGENT:			
Balance September 30, 1928	\$	2,500.00	\$
Appropriated 1929		2,500.00	
Disbursed		2,500.00	
Balance September 30, 1930	\$	908.98	\$
BOARD OF CHARITIES AND REFORM CONTINGENT:			
Balance September 30, 1928	\$	9,344.54	\$
Appropriated 1929		37,000.00	
Disbursed		29,762.74	
Balance September 30, 1930	\$	16,581.80	\$
BOARD OF CHARITIES AND REFORM REWARD CONTINGENT:			
Balance September 30, 1928	\$	625.00	\$
Appropriated 1929		1,000.00	
Disbursed		725.00	
Balance September 30, 1930	\$	900.00	\$
BOARD OF DENTAL EXAMINERS CONTINGENT:			
Balance September 30, 1928	\$	500.00	\$
Appropriated 1929		235.14	
Disbursed		214.86	
Balance September 30, 1930	\$	500.00	\$
BOARD OF EQUALIZATION SALARIES:			
Balance September 30, 1928	\$	6,750.00	\$
Appropriated 1929		17,250.00	
Disbursed		7,500.00	
Balance September 30, 1930	\$	24,750.00	\$
BOARD OF EQUALIZATION CONTINGENT:			
Balance September 30, 1928	\$	10,298.35	\$
Appropriated 1929		13,898.77	
Disbursed		4,154.58	
Balance September 30, 1930	\$	18,048.35	\$
BOARD OF HEALTH CONTINGENT:			
Balance September 30, 1928	\$	4,997.59	\$
Appropriated 1929		10,440.08	
Disbursed		5,557.83	
Balance September 30, 1930	\$	15,997.59	\$
BOARD OF LAW EXAMINERS CONTINGENT:			
Balance September 30, 1928	\$	1,160.04	\$
Appropriated 1929		2,176.94	
Disbursed		1,073.10	
Balance September 30, 1930	\$	3,250.04	\$
BOARD OF MEDICAL EXAMINERS CONTINGENT:			
Balance September 30, 1928	\$	303.15	\$
Appropriated 1929		840.70	
Disbursed		462.45	
Balance September 30, 1930	\$	1,303.15	\$
BOARD OF NURSE EXAMINERS CONTINGENT:			
Balance September 30, 1928	\$	1,217.06	\$
Appropriated 1929		2,112.82	
Disbursed		104.24	
Balance September 30, 1930	\$	2,217.06	\$
BOARD OF SHEEP COMMISSIONERS CONTINGENT:			
Balance September 30, 1928	\$	9,847.59	\$
Appropriated 1929		28,699.85	
Disbursed		8,447.74	
Balance September 30, 1930	\$	35,047.59	\$
BOARD OF SUPPLIES:			
Balance September 30, 1928	\$	518.50	\$
Appropriated 1929		1,800.00	
Disbursed		1,287.16	
Balance September 30, 1930	\$	2,118.50	\$
BOUNTY CONTINGENT:			
Balance September 30, 1928	\$	84.88	\$
Appropriated 1929		50,286.76	
Disbursed		12,231.88	
Balance September 30, 1930	\$	38,089.76	\$

BOARD OF DENTAL EXAMINERS CONTINGENT:			
Balance September 30, 1928	\$	500.00	\$
Appropriated 1929		235.14	
Disbursed		214.86	
Balance September 30, 1930	\$	500.00	\$
BOARD OF EQUALIZATION SALARIES:			
Balance September 30, 1928	\$	6,750.00	\$
Appropriated 1929		17,250.00	
Disbursed		7,500.00	
Balance September 30, 1930	\$	24,750.00	\$
BOARD OF EQUALIZATION CONTINGENT:			
Balance September 30, 1928	\$	10,298.35	\$
Appropriated 1929		13,898.77	
Disbursed		4,154.58	
Balance September 30, 1930	\$	18,048.35	\$
BOARD OF HEALTH CONTINGENT:			
Balance September 30, 1928	\$	4,997.59	\$
Appropriated 1929		10,440.08	
Disbursed		5,557.83	
Balance September 30, 1930	\$	15,997.59	\$
BOARD OF LAW EXAMINERS CONTINGENT:			
Balance September 30, 1928	\$	1,160.04	\$
Appropriated 1929		2,176.94	
Disbursed		1,073.10	
Balance September 30, 1930	\$	3,250.04	\$
BOARD OF MEDICAL EXAMINERS CONTINGENT:			
Balance September 30, 1928	\$	303.15	\$
Appropriated 1929		840.70	
Disbursed		462.45	
Balance September 30, 1930	\$	1,303.15	\$
BOARD OF NURSE EXAMINERS CONTINGENT:			
Balance September 30, 1928	\$	1,217.06	\$
Appropriated 1929		2,112.82	
Disbursed		104.24	
Balance September 30, 1930	\$	2,217.06	\$
BOARD OF SHEEP COMMISSIONERS CONTINGENT:			
Balance September 30, 1928	\$	9,847.59	\$
Appropriated 1929		28,699.85	
Disbursed		8,447.74	
Balance September 30, 1930	\$	35,047.59	\$
BOARD OF SUPPLIES:			
Balance September 30, 1928	\$	518.50	\$
Appropriated 1929		1,800.00	
Disbursed		1,287.16	
Balance September 30, 1930	\$	2,118.50	\$
BOUNTY CONTINGENT:			
Balance September 30, 1928	\$	84.88	\$
Appropriated 1929		50,286.76	
Disbursed		12,231.88	
Balance September 30, 1930	\$	38,089.76	\$

BUILDINGS AND FURNISHINGS GIRLS INDUSTRIAL INSTITUTE:			
Appropriated 1929	\$ 37,873.06	\$ 40,000.00	\$ 40,000.00
Disbursed	2,128.94		
Balance September 30, 1930		\$ 40,000.00	\$ 40,000.00
BURGLARY INSURANCE CONTINGENT:			
Appropriated 1929	\$ 6,338.50	\$ 6,500.00	\$ 6,500.00
Disbursed	183.50		
Balance September 30, 1930		\$ 6,500.00	\$ 6,500.00
BRONZE TABLETS FOR CAREY AND WARREN CONTINGENT:			
Appropriated 1929	\$ 1,500.00	\$ 1,500.00	\$ 1,500.00
Disbursed			
Balance September 30, 1930		\$ 1,500.00	\$ 1,500.00
CAPITOL BUILDING COMMISSION CONTINGENT:			
Balance September 30, 1928	\$ 48,490.82	\$ 7,318.64	\$ 7,318.64
Disbursed	1,027.82	42,200.00	42,200.00
Balance September 30, 1930	\$ 49,518.64	\$ 49,518.64	\$ 49,518.64
CAPITAL BUILDING HEATING PLANT CONTINGENT:			
Appropriated 1929	\$ 24,784.56	\$ 50,000.00	\$ 50,000.00
Disbursed	25,215.44		
Balance September 30, 1930	\$ 50,000.00	\$ 50,000.00	\$ 50,000.00
CAREY ACT DEPARTMENT CONTINGENT:			
Balance September 30, 1928	\$ 4,357.00	\$ 4,357.00	\$ 4,357.00
Disbursed			
Balance September 30, 1930	\$ 4,357.00	\$ 4,357.00	\$ 4,357.00
CHEMIST SALARY:			
Balance September 30, 1928	\$ 2,250.00	\$ 2,250.00	\$ 2,250.00
Appropriated 1929	5,750.00	6,000.00	6,000.00
Disbursed	2,500.00		
Balance September 30, 1930	\$ 8,250.00	\$ 8,250.00	\$ 8,250.00
CHEMIST CONTINGENT:			
Balance September 30, 1928	\$ 2,897.12	\$ 2,897.12	\$ 2,897.12
Appropriated 1929	3,970.14	4,300.00	4,300.00
Disbursed	3,926.98		
Balance September 30, 1930	\$ 7,297.12	\$ 7,297.12	\$ 7,297.12
CARPET FOR GOVERNOR'S OFFICE CONTINGENT:			
Balance September 30, 1928	\$ 4.00	\$ 4.00	\$ 4.00
Disbursed			
Balance September 30, 1930	\$ 4.00	\$ 4.00	\$ 4.00
CASPER AGRICULTURAL AND POULTRY SHOW CONTINGENT:			
Balance September 30, 1928	\$ 4.00	\$ 4.00	\$ 4.00
Disbursed	1,778.69	1,778.69	1,778.69
Balance September 30, 1930	\$ 1,778.69	\$ 1,778.69	\$ 1,778.69
CLERK OF SUPREME COURT SALARY:			
Balance September 30, 1928	\$ 2,250.00	\$ 2,250.00	\$ 2,250.00
Appropriated 1929	5,750.00	6,000.00	6,000.00
Disbursed	2,500.00		
Balance September 30, 1930	\$ 8,250.00	\$ 8,250.00	\$ 8,250.00

COAL MINE EXAMINING BOARD CONTINGENT:			
Balance September 30, 1928	\$ 1,101.42	\$ 2,509.47	\$ 2,509.47
Appropriated 1929	1,408.05		
Disbursed			
Balance September 30, 1930	\$ 2,509.47	\$ 2,509.47	\$ 2,509.47
COMMISSIONER OF AGRICULTURE SALARY:			
Balance September 30, 1928	\$ 7,666.66	\$ 8,000.00	\$ 8,000.00
Appropriated 1929	8,338.34	8,000.00	8,000.00
Disbursed			
Balance September 30, 1930	\$ 11,000.00	\$ 11,000.00	\$ 11,000.00
COMMISSIONER OF AGRICULTURE CONTINGENT:			
Balance September 30, 1928	\$ 16,843.36	\$ 7,338.66	\$ 7,338.66
Appropriated 1929	4,405.80	14,000.00	14,000.00
Disbursed			
Balance September 30, 1930	\$ 21,338.66	\$ 21,338.66	\$ 21,338.66
COMMISSIONER OF CHILD AND ANIMAL PROTECTION CONTINGENT:			
Balance September 30, 1928	\$ 4,088.74	\$ 4,088.74	\$ 4,088.74
Disbursed			
Balance September 30, 1930	\$ 4,088.74	\$ 4,088.74	\$ 4,088.74
COMMISSIONER OF EDUCATION SALARY:			
Balance September 30, 1928	\$ 8,483.88	\$ 9,600.00	\$ 9,600.00
Appropriated 1929	4,716.12	9,600.00	9,600.00
Disbursed			
Balance September 30, 1930	\$ 13,200.00	\$ 13,200.00	\$ 13,200.00
COMMISSION ON IDAHO BOUNDARY LINE CONTINGENT:			
Balance September 30, 1928	\$ 306.99	\$ 792.58	\$ 792.58
Appropriated 1929	485.59		
Disbursed			
Balance September 30, 1930	\$ 792.58	\$ 792.58	\$ 792.58
COMMISSIONER OF INSURANCE SALARY:			
Balance September 30, 1928	\$ 7,846.78	\$ 2,846.78	\$ 2,846.78
Appropriated 1929	3,000.00	7,200.00	7,200.00
Disbursed			
Balance September 30, 1930	\$ 10,846.78	\$ 10,046.78	\$ 10,046.78
COMMISSIONER OF CHILD AND ANIMAL PROTECTION SALARY:			
Balance September 30, 1928	\$ 1,875.05	\$ 1,875.05	\$ 1,875.05
Disbursed			
Balance September 30, 1930	\$ 1,875.05	\$ 1,875.05	\$ 1,875.05
COMMISSIONER OF INSURANCE CONTINGENT:			
Balance September 30, 1928	\$ 9,413.89	\$ 3,797.58	\$ 3,797.58
Appropriated 1929	4,983.67	10,600.00	10,600.00
Disbursed			
Balance September 30, 1930	\$ 14,397.56	\$ 14,397.56	\$ 14,397.56
COMMISSIONER OF LABOR SALARY:			
Balance September 30, 1928	\$ 5,750.00	\$ 2,250.00	\$ 2,250.00
Appropriated 1929	2,500.00	6,000.00	6,000.00
Disbursed			
Balance September 30, 1930	\$ 8,250.00	\$ 8,250.00	\$ 8,250.00

REPORT OF STATE TREASURER

COMMISSIONER OF LABOR CONTINGENT:

Balance September 30, 1928	\$	1,891.88
Appropriated 1929	\$	3,560.00
Disbursed	\$	3,874.64
Balance September 30, 1930	\$	1,566.34

Balance September 30, 1928	\$	5,241.98
Appropriated 1929	\$	3,000.02
Disbursed	\$	8,000.00
Balance September 30, 1930	\$	7,666.69

Balance September 30, 1928	\$	11,000.02
Appropriated 1929	\$	16,847.10
Disbursed	\$	36,660.00
Balance September 30, 1930	\$	36,877.84

Balance September 30, 1928	\$	53,547.10
Appropriated 1929	\$	3,471.49
Disbursed	\$	5.80
Balance September 30, 1930	\$	3,471.29

Balance September 30, 1928	\$	3,600.00
Appropriated 1929	\$	9,600.00
Disbursed	\$	9,200.00
Balance September 30, 1930	\$	4,000.00

Balance September 30, 1928	\$	13,200.00
Appropriated 1929	\$	23,132.80
Disbursed	\$	65,080.00
Balance September 30, 1930	\$	56,297.60

Balance September 30, 1928	\$	31,915.20
Appropriated 1929	\$	88,212.80
Disbursed	\$	88,212.80
Balance September 30, 1930	\$	88,212.80

Balance September 30, 1928	\$	7,130.73
Appropriated 1929	\$	7,130.73
Disbursed	\$	7,130.73
Balance September 30, 1930	\$	7,130.73

Balance September 30, 1928	\$	2,700.34
Appropriated 1929	\$	475.76
Disbursed	\$	2,224.58
Balance September 30, 1930	\$	2,700.34

Balance September 30, 1928	\$	182.59
Appropriated 1929	\$	530.30
Disbursed	\$	232.50
Balance September 30, 1930	\$	762.89

Balance September 30, 1928	\$	3.26
Appropriated 1929	\$	3.26
Disbursed	\$	3.26
Balance September 30, 1930	\$	3.26

Balance September 30, 1928	\$	5,000.00
Appropriated 1929	\$	5,000.00
Disbursed	\$	5,000.00
Balance September 30, 1930	\$	5,000.00

Balance September 30, 1928	\$	5,000.00
Appropriated 1929	\$	5,000.00
Disbursed	\$	5,000.00
Balance September 30, 1930	\$	5,000.00

REPORT OF STATE TREASURER

CONTROL OF PUBLIC LANDS:

Balance September 30, 1928	\$	722.66
Appropriated 1929	\$	9,277.34
Disbursed	\$	10,000.00
Balance September 30, 1930	\$	10,000.00

Balance September 30, 1928	\$	2,000.00
Appropriated 1929	\$	979.77
Disbursed	\$	1,020.23
Balance September 30, 1930	\$	2,000.00

CO-OPERATIVE MARKETING CONTINGENT:

Balance September 30, 1928	\$	17,100.00
Appropriated 1929	\$	41,900.00
Disbursed	\$	43,200.00
Balance September 30, 1930	\$	18,400.00

Balance September 30, 1928	\$	60,300.00
Appropriated 1929	\$	60,300.00
Disbursed	\$	60,300.00
Balance September 30, 1930	\$	60,300.00

COURT REPORTER DISTRICT 1 CONTINGENT:

Balance September 30, 1928	\$	581.80
Appropriated 1929	\$	940.00
Disbursed	\$	350.32
Balance September 30, 1930	\$	671.48

Balance September 30, 1928	\$	1,521.50
Appropriated 1929	\$	1,650.08
Disbursed	\$	987.25
Balance September 30, 1930	\$	2,637.36

COURT REPORTER DISTRICT 2 CONTINGENT:

Balance September 30, 1928	\$	544.88
Appropriated 1929	\$	2,200.00
Disbursed	\$	1,799.15
Balance September 30, 1930	\$	945.71

Balance September 30, 1928	\$	2,744.86
Appropriated 1929	\$	447.20
Disbursed	\$	746.11
Balance September 30, 1930	\$	1,510.95

COURT REPORTER DISTRICT 3 CONTINGENT:

Balance September 30, 1928	\$	1,197.20
Appropriated 1929	\$	236.59
Disbursed	\$	1,720.47
Balance September 30, 1930	\$	816.12

Balance September 30, 1928	\$	2,536.59
Appropriated 1929	\$	654.10
Disbursed	\$	1,667.62
Balance September 30, 1930	\$	856.48

COURT REPORTER DISTRICT 4 CONTINGENT:

Balance September 30, 1928	\$	2,524.10
Appropriated 1929	\$	985.34
Disbursed	\$	1,589.92
Balance September 30, 1930	\$	973.42

Balance September 30, 1928	\$	2,568.34
Appropriated 1929	\$	2,568.34
Disbursed	\$	2,568.34
Balance September 30, 1930	\$	2,568.34

COMMISSION ON INTERSTATE STREAMS:

Balance September 30, 1928	\$	2,700.34
Appropriated 1929	\$	475.76
Disbursed	\$	2,224.58
Balance September 30, 1930	\$	2,700.34

Balance September 30, 1928	\$	182.59
Appropriated 1929	\$	530.30
Disbursed	\$	232.50
Balance September 30, 1930	\$	762.89

CONSTRUCTION OF ARMORY AT LUSK:

Balance September 30, 1928	\$	3.26
Appropriated 1929	\$	3.26
Disbursed	\$	3.26
Balance September 30, 1930	\$	3.26

CONSTRUCTION NATIONAL GUARD SUPPLY DEPARTMENT CONTINGENT:

Balance September 30, 1928	\$	5,000.00
Appropriated 1929	\$	5,000.00
Disbursed	\$	5,000.00
Balance September 30, 1930	\$	5,000.00

Balance September 30, 1928	\$	5,000.00
Appropriated 1929	\$	5,000.00
Disbursed	\$	5,000.00
Balance September 30, 1930	\$	5,000.00

REPORT OF STATE TREASURER

COURT REPORTER DISTRICT 8 CONTINGENT:			
Balance September 30, 1928	\$	510.79	
Appropriated 1929		1,027.00	\$
Disbursed		889.89	1,057.00
Balance September 30, 1930			
	\$	1,867.79	\$
			1,867.79
COURT REPORTER DISTRICT 9 CONTINGENT:			
Balance September 30, 1928	\$	215.69	
Appropriated 1929		1,590.00	\$
Disbursed		1,056.17	
Balance September 30, 1930		859.52	
	\$	1,715.69	\$
			1,715.69
CROP INSPECTION CONTINGENT:			
Balance September 30, 1928	\$	1,766.00	
Appropriated 1929		2,000.00	\$
Disbursed		1,909.11	
Balance September 30, 1930		1,856.89	
	\$	3,766.00	\$
			3,766.00
DAIRY, FOOD AND OIL COMMISSIONER'S CONTINGENT:			
Balance September 30, 1928	\$	5,779.53	
Appropriated 1929		17,250.00	\$
Disbursed		16,522.15	
Balance September 30, 1930		6,497.38	
	\$	23,029.53	\$
			23,029.53
DEPARTMENT OF COMMERCE AND INDUSTRY CONTINGENT:			
Balance September 30, 1928	\$	9,762.08	
Appropriated 1929		12,854.25	\$
Disbursed		22,416.33	
	\$	22,416.33	\$
			22,416.33
DEPREDAATION BY GAME ANIMALS CONTINGENT:			
Balance September 30, 1928	\$	420.00	
Appropriated 1929		420.00	\$
Disbursed			
	\$	420.00	\$
			420.00
DEAF, DUMB AND BLIND CONTINGENT:			
Balance September 30, 1928	\$	16,000.00	
Appropriated 1929		12,084.65	\$
Disbursed		8,965.35	
Balance September 30, 1930			
	\$	10,000.00	\$
			10,000.00
DEAF, DUMB AND BLIND FIELD AGENT SALARY AND EXPENSE:			
Balance September 30, 1928	\$	4,510.44	
Appropriated 1929		5,489.56	\$
Disbursed			
Balance September 30, 1930			
	\$	10,000.00	\$
			10,000.00
DEPUTY ATTORNEY GENERAL'S SALARY:			
Balance September 30, 1928	\$	2,250.00	
Appropriated 1929		7,250.71	\$
Disbursed		6,510.71	
Balance September 30, 1930		3,000.00	
	\$	9,510.71	\$
			9,510.71
DEPUTY AUDITOR'S SALARY:			
Balance September 30, 1928	\$	2,472.00	
Appropriated 1929		6,030.86	\$
Disbursed		5,755.86	
Balance September 30, 1930		2,750.00	
	\$	8,505.86	\$
			8,505.86

REPORT OF STATE TREASURER

DEPUTY COMMISSIONER OF INSURANCE SALARY:			
Balance September 30, 1928	\$	1,800.00	
Appropriated 1929		4,500.00	\$
Disbursed		4,500.00	
Balance September 30, 1930		2,000.00	
	\$	6,600.00	\$
			6,600.00
DEPUTY COMMISSIONER OF LABOR AND STATISTICS SALARY:			
Balance September 30, 1928	\$	1,539.11	
Appropriated 1929		4,000.00	\$
Disbursed		3,672.95	
Balance September 30, 1930		1,866.16	
	\$	5,539.11	\$
			5,539.11
DEPUTY COMMISSIONER OF LAW ENFORCEMENT SALARY:			
Balance September 30, 1928	\$	3,400.00	
Appropriated 1929		2,200.00	\$
Disbursed		3,150.00	
Balance September 30, 1930		2,450.00	
	\$	5,400.00	\$
			5,400.00
DEPUTY COMMISSIONER OF PUBLIC LANDS SALARY:			
Balance September 30, 1928	\$	2,250.00	
Appropriated 1929		6,500.00	\$
Disbursed		6,100.00	
Balance September 30, 1930		2,750.00	
	\$	8,500.00	\$
			8,500.00
DEPUTY ENGINEER'S SALARY:			
Balance September 30, 1928	\$	2,025.00	
Appropriated 1929		6,000.00	\$
Disbursed		5,525.00	
Balance September 30, 1930		2,500.00	
	\$	8,025.00	\$
			8,025.00
DEPUTY GEOLOGIST'S SALARY:			
Balance September 30, 1928	\$	2,266.67	
Appropriated 1929		6,000.00	\$
Disbursed		5,766.67	
Balance September 30, 1930		2,500.00	
	\$	8,266.67	\$
			8,266.67
DEPUTY INSPECTOR COAL MINES SALARY:			
Balance September 30, 1928	\$	6,651.72	
Appropriated 1929		14,400.00	\$
Disbursed		15,051.72	
Balance September 30, 1930		6,000.00	
	\$	21,051.72	\$
			21,051.72
DEPUTY SECRETARY OF STATE SALARY:			
Balance September 30, 1928	\$	2,025.00	
Appropriated 1929		6,030.36	\$
Disbursed		5,555.36	
Balance September 30, 1930		2,500.00	
	\$	8,055.36	\$
			8,055.36
DEPUTY SUPERINTENDENT OF PUBLIC INSTRUCTION SALARY:			
Balance September 30, 1928	\$	1,800.00	
Appropriated 1929		4,800.00	\$
Disbursed		4,468.06	
Balance September 30, 1930		2,141.94	
	\$	6,600.00	\$
			6,600.00
DEPUTY TREASURER'S SALARY:			
Balance September 30, 1928	\$	2,025.00	
Appropriated 1929		6,030.36	\$
Disbursed		5,555.36	
Balance September 30, 1930		2,500.00	
	\$	8,055.36	\$
			8,055.36

DEPUTY VETERINARIAN'S SALARY:			
Balance September 30, 1928	\$	1,350.00	\$
Appropriated 1929		2,860.00	
Disbursed		2,090.00	
Balance September 30, 1930	\$	4,950.00	\$
DISTRICT JUDGES ATTENDING SUPREME COURT EXPENSE CONTINGENT:			
Balance September 30, 1928	\$	1,560.56	\$
Appropriated 1929		1,560.56	
Disbursed		1,560.56	
Balance September 30, 1930	\$	1,560.56	\$
DISTRICT JUDGES SPECIAL CONTINGENT:			
Balance September 30, 1928	\$	1,000.00	\$
Appropriated 1929		1,000.00	
Disbursed		1,000.00	
Balance September 30, 1930	\$	1,000.00	\$
DRAINAGE AND SEWER GIRLS' INDUSTRIAL INSTITUTE CONTINGENT:			
Balance September 30, 1928	\$	5,000.00	\$
Appropriated 1929		5,000.00	
Disbursed		5,000.00	
Balance September 30, 1930	\$	5,000.00	\$
ENGINEER'S SALARY:			
Balance September 30, 1928	\$	2,600.00	\$
Appropriated 1929		9,200.00	
Disbursed		4,000.00	
Balance September 30, 1930	\$	18,200.00	\$
ENGINEER'S CONTINGENT:			
Balance September 30, 1928	\$	6,599.27	\$
Appropriated 1929		28,567.25	
Disbursed		17,532.01	
Balance September 30, 1930	\$	46,099.27	\$
EXAMINER'S SALARY:			
Balance September 30, 1928	\$	5,600.00	\$
Appropriated 1929		4,000.00	
Disbursed		9,600.00	
Balance September 30, 1930	\$	9,600.00	\$
EXAMINER'S CONTINGENT:			
Balance September 30, 1928	\$	8,000.00	\$
Appropriated 1929		8,000.00	
Disbursed		8,000.00	
Balance September 30, 1930	\$	8,000.00	\$
FARM LOAN CLERK SALARY:			
Balance September 30, 1928	\$	1,800.00	\$
Appropriated 1929		1,800.00	
Disbursed		1,800.00	
Balance September 30, 1930	\$	1,800.00	\$
FARM LOAN DEPARTMENT CONTINGENT:			
Balance September 30, 1928	\$	10,633.68	\$
Appropriated 1929		27,909.99	
Disbursed		20,823.69	
Balance September 30, 1930	\$	46,733.68	\$
FARM LOAN BOARD SURPLUS CONTINGENT:			
Balance September 30, 1928	\$	4,423.47	\$
Appropriated 1929		45,576.53	
Disbursed		50,000.00	
Balance September 30, 1930	\$	50,000.00	\$

FOREST FIRE PROTECTION CONTINGENT:			
Balance September 30, 1928	\$	1,000.00	\$
Appropriated 1929		1,000.00	
Disbursed		1,000.00	
Balance September 30, 1930	\$	2,000.00	\$
FOUR STATES COMPACT EXPENSE CONTINGENT:			
Balance September 30, 1928	\$	2,285.06	\$
Appropriated 1929		2,714.94	
Disbursed		5,000.00	
Balance September 30, 1930	\$	5,000.00	\$
FURNITURE AND REPAIRS LEGISLATIVE HALLS:			
Balance September 30, 1928	\$	4,517.14	\$
Appropriated 1929		4,982.84	
Disbursed		4,584.30	
Balance September 30, 1930	\$	9,517.14	\$
GAME AND FISH CONTINGENT:			
Balance September 30, 1928	\$	99,965.37	\$
Appropriated 1929		34.63	
Disbursed		100,000.00	
Balance September 30, 1930	\$	100,000.00	\$
GAS AND OIL INSPECTOR'S SALARY:			
Balance September 30, 1928	\$	7,740.58	\$
Appropriated 1929		14,198.92	
Disbursed		5,541.66	
Balance September 30, 1930	\$	10,740.58	\$
GAS AND OIL CONSERVATION CONTINGENT:			
Balance September 30, 1928	\$	1,111.89	\$
Appropriated 1929		6,778.61	
Disbursed		1,832.76	
Balance September 30, 1930	\$	8,611.89	\$
GEOLOGIST'S SALARY:			
Balance September 30, 1928	\$	8,000.00	\$
Appropriated 1929		7,200.00	
Disbursed		3,000.00	
Balance September 30, 1930	\$	10,200.00	\$
GEOLOGIST'S CONTINGENT:			
Balance September 30, 1928	\$	2,806.60	\$
Appropriated 1929		9,556.63	
Disbursed		5,750.97	
Balance September 30, 1930	\$	15,306.60	\$
GIRLS' INDUSTRIAL INSTITUTE CONTINGENT:			
Balance September 30, 1928	\$	931.97	\$
Appropriated 1929		28,451.68	
Disbursed		18,680.23	
Balance September 30, 1930	\$	42,131.97	\$
GIRLS' INDUSTRIAL INSTITUTE ROAD IMPROVEMENT CONTINGENT:			
Balance September 30, 1928	\$	2,500.00	\$
Appropriated 1929		2,500.00	
Disbursed		2,500.00	
Balance September 30, 1930	\$	2,500.00	\$

REPORT OF STATE TREASURER

GIRLS' INDUSTRIAL INSTITUTE EQUIPMENT AND IMPROVEMENT CONTINGENT:

Appropriated 1929	\$ 20,868.03	\$ 25,000.00
Disbursed	4,341.97	
Balance September 30, 1930	\$ 25,000.00	\$ 25,000.00

GOVERNOR'S SALARY:

Balance September 30, 1928	\$ 4,500.00	\$ 4,500.00
Appropriated 1929	11,500.00	12,000.00
Disbursed	5,000.00	
Balance September 30, 1930	\$ 16,500.00	\$ 16,500.00

GOVERNOR'S CONTINGENT:

Balance September 30, 1928	\$ 3,663.73	\$ 3,663.73
Appropriated 1929	9,447.29	9,100.00
Disbursed	3,321.45	
Balance September 30, 1930	\$ 12,768.73	\$ 12,768.73

GOVERNOR'S CONFERENCE CONTINGENT:

Balance September 30, 1928	\$ 97.57	\$ 97.57
Appropriated 1929	197.57	800.00
Disbursed	700.30	
Balance September 30, 1930	\$ 397.57	\$ 897.57

GOVERNOR'S EMERGENCY CONTINGENT:

Balance September 30, 1928	\$ 9,902.60	\$ 9,902.60
Appropriated 1929	10,456.97	10,000.00
Disbursed	9,446.63	
Balance September 30, 1930	\$ 19,902.60	\$ 19,902.60

GOVERNOR'S CONFERENCE 1926 CONTINGENT:

Balance September 30, 1928	\$ 23.92	\$ 23.92
Disbursed		
Balance September 30, 1930	\$ 23.92	\$ 23.92

HISTORIAN'S SALARY:

Balance September 30, 1928	\$ 1,800.00	\$ 1,800.00
Appropriated 1929	4,800.00	4,800.00
Disbursed	4,600.00	
Balance September 30, 1930	\$ 6,600.00	\$ 6,600.00

HISTORIAN'S CONTINGENT:

Balance September 30, 1928	\$ 1,432.17	\$ 1,432.17
Appropriated 1929	5,318.35	6,200.00
Disbursed	2,318.52	
Balance September 30, 1930	\$ 7,632.17	\$ 7,632.17

HISTORIAN BINDING, NEWSPAPERS AND PAMPHLETS CONTINGENT:

Balance September 30, 1928	\$ 251.00	\$ 251.00
Disbursed		
Balance September 30, 1930	\$ 251.00	\$ 251.00

HISTORICAL LAND MARK COMMISSION CONTINGENT:

Appropriated 1929	\$ 562.81	\$ 700.00
Disbursed	147.69	
Balance September 30, 1930	\$ 700.00	\$ 700.00

REPORT OF STATE TREASURER

HOME FOR DEPENDENT CHILDREN CONTINGENT:

Balance September 30, 1928	\$ 11,480.80	\$ 11,480.80
Appropriated 1929	29,309.72	33,000.00
Disbursed	16,121.08	
Balance September 30, 1930	\$ 44,430.80	\$ 44,430.80

HOME FOR DEPENDENT CHILDREN IMPROVEMENT CONTINGENT:

Appropriated 1929	\$ 2,400.00	\$ 2,400.00
Disbursed		
Balance September 30, 1930	\$ 2,400.00	\$ 2,400.00

HOME FOR DEPENDENT CHILDREN NEW BUILDINGS AND ADDITIONS:

Appropriated 1929	\$ 7,500.00	\$ 7,500.00
Disbursed		
Balance September 30, 1930	\$ 7,500.00	\$ 7,500.00

INSPECTOR OF COAL MINES SALARY:

Balance September 30, 1928	\$ 3,150.00	\$ 3,150.00
Appropriated 1929	8,060.00	8,400.00
Disbursed	3,500.00	
Balance September 30, 1930	\$ 11,550.00	\$ 11,550.00

INSPECTOR COAL MINES CONTINGENT:

Balance September 30, 1928	\$ 6,081.59	\$ 6,081.59
Appropriated 1929	14,886.73	14,886.00
Disbursed	5,904.36	
Balance September 30, 1930	\$ 20,891.68	\$ 20,891.68

INTERSTATE STREAMS COMMISSIONER'S CONTINGENT:

Appropriated 1929	\$ 8,799.44	\$ 20,000.00
Disbursed	11,210.56	
Balance September 30, 1930	\$ 20,000.00	\$ 20,000.00

JACKSON FISH HATCHERY CONSTRUCTION AND EQUIPMENT CONTINGENT:

Appropriated	\$ 6,000.00	\$ 6,000.00
Disbursed		
Balance September 30, 1930	\$ 6,000.00	\$ 6,000.00

JUDGES OF DISTRICT COURT SALARIES:

Balance September 30, 1928	\$ 44,714.29	\$ 44,714.29
Appropriated 1929	111,588.44	117,244.53
Disbursed	60,376.43	
Balance September 30, 1930	\$ 161,958.87	\$ 161,958.87

JUDGE DISTRICT COURT 1 CONTINGENT:

Balance September 30, 1928	\$ 1,974.02	\$ 1,974.02
Appropriated 1929	2,712.86	2,500.00
Disbursed	1,761.14	
Balance September 30, 1930	\$ 4,474.02	\$ 4,474.02

JUDGE DISTRICT COURT 2 CONTINGENT:

Balance September 30, 1928	\$ 1,508.49	\$ 1,508.49
Appropriated 1929	2,630.13	3,000.00
Disbursed	1,678.36	
Balance September 30, 1930	\$ 4,308.49	\$ 4,308.49

JUDGE DISTRICT COURT 3 CONTINGENT:

Balance September 30, 1928	\$	811.13
Appropriated 1929	\$	1,968.85
Disbursed	\$	1,644.28
Balance September 30, 1930	\$	3,611.13

JUDGE DISTRICT COURT 4 CONTINGENT:

Balance September 30, 1928	\$	855.25
Appropriated 1929	\$	1,750.00
Disbursed	\$	1,722.66
Balance September 30, 1930	\$	882.59

JUDGE DISTRICT COURT 5 CONTINGENT:

Balance September 30, 1928	\$	815.47
Appropriated 1929	\$	3,823.20
Disbursed	\$	792.27
Balance September 30, 1930	\$	4,115.47

JUDGE DISTRICT COURT 6 CONTINGENT:

Balance September 30, 1928	\$	1,885.08
Appropriated 1929	\$	2,500.00
Disbursed	\$	2,918.98
Balance September 30, 1930	\$	1,466.10

JUDGE DISTRICT COURT 7 CONTINGENT:

Balance September 30, 1928	\$	1,788.46
Appropriated 1929	\$	2,700.00
Disbursed	\$	2,888.58
Balance September 30, 1930	\$	1,599.88

JUDGE DISTRICT COURT 8 CONTINGENT:

Balance September 30, 1928	\$	1,008.22
Appropriated 1929	\$	2,000.00
Disbursed	\$	2,208.65
Balance September 30, 1930	\$	799.57

JUDGE DISTRICT COURT 9 CONTINGENT:

Balance September 30, 1928	\$	659.01
Appropriated 1929	\$	3,000.00
Disbursed	\$	2,778.11
Balance September 30, 1930	\$	880.90

JUSTICES SUPREME COURT SALARIES:

Balance September 30, 1928	\$	16,126.49
Appropriated 1929	\$	42,000.00
Disbursed	\$	40,826.85
Balance September 30, 1930	\$	17,500.14

LEGISLATIVE PRINTING 19TH LEGISLATURE:

Balance September 30, 1928	\$	4,894.84
Disbursed	\$	4,894.84

LEGISLATIVE PRINTING 20TH LEGISLATURE:

Appropriated 1929	\$	4,117.69
Disbursed	\$	5,882.31
Balance September 30, 1930	\$	10,000.00

LEGISLATIVE PRINTING SPECIAL SESSION 20TH LEGISLATURE:

Appropriated 1929	\$	89.89
Disbursed	\$	210.01
Balance September 30, 1930	\$	300.00

LIBRARIAN'S SALARY:

Balance September 30, 1928	\$	2,000.00
Appropriated 1929	\$	5,500.00
Disbursed	\$	2,500.00
Balance September 30, 1930	\$	8,000.00

LIBRARIAN'S CONTINGENT:

Balance September 30, 1928	\$	6,733.09
Appropriated 1929	\$	11,757.29
Disbursed	\$	7,675.80
Balance September 30, 1930	\$	19,433.09

MATERNAL AND CHILD WELFARE CONTINGENT:

Balance September 30, 1928	\$	32.18
Appropriated 1929	\$	2,891.60
Disbursed	\$	4,640.58
Balance September 30, 1930	\$	7,532.18

MEMBERS BOARD OF HEALTH SALARIES:

Balance September 30, 1928	\$	165.00
Disbursed	\$	165.00
Balance September 30, 1930	\$	166.00

MEETING COUNTY ASSESSORS AND COMMISSIONERS CONTINGENT:

Balance September 30, 1928	\$	1,167.50
Appropriated 1929	\$	1,955.60
Disbursed	\$	511.84
Balance September 30, 1930	\$	2,467.50

MESSENGER SECRETARY OF STATE BOARD OF SUPPLIES:

Appropriated 1929	\$	125.00
Disbursed	\$	125.00
Balance September 30, 1930	\$	125.00

MILEAGE AND PER DIEM MEMBERS 19TH LEGISLATURE:

Balance September 30, 1928	\$	689.48
Disbursed	\$	689.48
Balance September 30, 1930	\$	70,000.00

MILEAGE AND PER DIEM MEMBERS 20TH LEGISLATURE:

Appropriated 1929	\$	66,737.00
Disbursed	\$	3,263.00
Balance September 30, 1930	\$	70,000.00

MILEAGE AND PER DIEM SPECIAL SESSION 20TH LEGISLATURE:

Appropriated 1929	\$	12,677.00
Disbursed	\$	2,323.00
Balance September 30, 1930	\$	15,000.00

REPORT OF STATE TREASURER

MILITIA EXPENSE:			
Balance September 30, 1928	\$	4,796.98	\$
Appropriated 1929		28,830.44	42,580.00
Disbursed		18,466.54	
Balance September 30, 1930	\$	47,296.94	\$ 47,296.98
MOTOR VEHICLE INSPECTION:			
Balance September 30, 1928	\$		\$ 5,120.00
Appropriated 1929		12,927.68	15,800.00
Disbursed		8,892.87	
Balance September 30, 1930	\$	20,920.00	\$ 20,920.00
NEWFORK DAM AND IRRIGATION DISTRICT CONTINGENT:			
Appropriated 1929	\$	15,000.00	\$ 15,000.00
Disbursed			
Balance September 30, 1930	\$	15,000.00	\$ 15,000.00
PENITENTIARY WARDEN'S SALARY:			
Balance September 30, 1928	\$		\$ 2,250.00
Appropriated 1929		5,500.00	6,000.00
Disbursed		2,750.00	
Balance September 30, 1930	\$	8,250.00	\$ 8,250.00
PENITENTIARY MAINTENANCE CONTINGENT:			
Appropriated 1929	\$	114,448.18	\$ 114,600.00
Disbursed		151.82	
Balance September 30, 1930	\$	114,800.00	\$ 114,600.00
PENITENTIARY IMPROVEMENT OF GROUNDS:			
Appropriated 1929	\$	2,411.56	\$ 2,500.00
Disbursed		88.44	
Balance September 30, 1930	\$	2,500.00	\$ 2,500.00
PENITENTIARY WARDEN LIGHT, WATER AND FUEL CONTINGENT:			
Appropriated 1929	\$	1,500.00	\$ 1,500.00
Disbursed			
Balance September 30, 1930	\$	1,500.00	\$ 1,500.00
PENITENTIARY CONSTRUCTION AND IMPROVEMENTS CONTINGENT:			
Appropriated 1929	\$	5,295.16	\$ 150,000.00
Disbursed		144,714.84	
Balance September 30, 1930	\$	150,000.00	\$ 150,000.00
PENITENTIARY WARDEN'S RESIDENCE AND GARAGE CONTINGENT:			
Appropriated 1929	\$	15,000.00	\$ 15,000.00
Disbursed			
Balance September 30, 1930	\$	15,000.00	\$ 15,000.00
PER DIEM AND EXPENSE PRESIDENTIAL ELECTORS CONTINGENT:			
Appropriated 1929	\$	400.00	\$ 400.00
Disbursed			
Balance September 30, 1930	\$	400.00	\$ 400.00
PREDATORY ANIMAL BIOLOGICAL CONTINGENT			
Balance September 30, 1928	\$		\$ 10,760.22
Appropriated 1929		86,900.05	80,000.00
Disbursed		3,860.17	
Balance September 30, 1930	\$	10,760.22	\$ 40,760.22

REPORT OF STATE TREASURER

PREPARING SESSION LAWS 19TH LEGISLATURE:			
Balance September 30, 1928	\$	300.00	\$ 300.00
Disbursed			
Balance September 30, 1930	\$	300.00	\$ 300.00
PREPARING SESSION LAWS 20TH LEGISLATURE:			
Appropriated 1929	\$	350.00	\$ 600.00
Disbursed		250.00	
Balance September 30, 1930	\$	600.00	\$ 600.00
PREPARING JOURNALS FOR PRINTING HOUSE AND SENATE 20TH LEGISLATURE:			
Appropriated 1929	\$	400.00	\$ 400.00
Disbursed			
Balance September 30, 1930	\$	400.00	\$ 400.00
PRINTING GOVERNOR'S MESSAGE:			
Balance September 30, 1928	\$		\$ 429.46
Appropriated 1929		499.18	500.00
Disbursed		480.28	
Balance September 30, 1930	\$	929.46	\$ 929.46
PRINTING JOURNALS 19TH LEGISLATURE:			
Balance September 30, 1928	\$	847.85	\$ 847.85
Disbursed			
Balance September 30, 1930	\$	847.85	\$ 847.85
PRINTING JOURNALS 20TH LEGISLATURE:			
Appropriated 1929	\$	1,769.50	\$ 2,500.00
Disbursed		730.50	
Balance September 30, 1930	\$	2,500.00	\$ 2,500.00
PRINTING SESSION LAWS 19TH LEGISLATURE:			
Balance September 30, 1928	\$	899.45	\$ 899.45
Disbursed			
Balance September 30, 1930	\$	899.45	\$ 899.45
PRINTING SESSION LAWS 20TH LEGISLATURE:			
Appropriated 1929	\$	1,464.65	\$ 2,500.00
Disbursed		1,035.35	
Balance September 30, 1930	\$	2,500.00	\$ 2,500.00
PRINTING SESSION LAWS SPECIAL SESSION 20TH LEGISLATURE:			
Appropriated 1929	\$	56.04	\$ 200.00
Disbursed		143.96	
Balance September 30, 1930	\$	200.00	\$ 200.00
PROTECTION TITLES TO STATE LANDS CONTINGENT:			
Balance September 30, 1928	\$	500.00	\$ 500.00
Disbursed			
Balance September 30, 1930	\$	500.00	\$ 500.00
PUBLICATION CORPORATION PROCLAMATION CONTINGENT:			
Balance September 30, 1928	\$	64.61	\$ 64.61
Disbursed			
Balance September 30, 1930	\$	64.61	\$ 64.61

PUBLICATION DIGEST SUPREME COURT DECISIONS CONTINGENT:		
Appropriated 1929	\$ 42.12	\$ 6,600.00
Disbursed	6,657.88	
Balance September 30, 1930		\$ 6,600.00
PUBLICATION SUPREME COURT DECISIONS CONTINGENT:		
Balance September 30, 1928		\$ 1,046.50
Appropriated 1929	3,867.00	5,841.00
Disbursed	2,820.50	
Balance September 30, 1930		\$ 6,887.50
PUBLIC SERVICE COMMISSION CONTINGENT:		
Appropriated 1929	14,306.77	\$ 25,750.00
Disbursed	11,444.23	
Balance September 30, 1930		\$ 25,750.00
PURCHASE OF HAY WYOMING TRAINING SCHOOL CONTINGENT:		
Balance September 30, 1928		\$ 301.76
Disbursed	301.76	
Balance September 30, 1930		\$ 301.76
PURCHASE STATE FLAGS CONTINGENT:		
Balance September 30, 1928		\$ 3.00
Disbursed	3.00	
Balance September 30, 1930		\$ 3.00
PURCHASE OF HISTORICAL LAND MARKS CONTINGENT:		
Appropriated 1929	7,614.13	\$ 10,000.00
Disbursed	2,455.87	
Balance September 30, 1930		\$ 10,000.00
QUARTERMASTER'S SALARY:		
Balance September 30, 1928		\$ 1,850.00
Appropriated 1929	3,450.00	3,600.00
Disbursed	1,500.00	
Balance September 30, 1930		\$ 4,950.00
QUARTERMASTER PROPERTY MAN SALARY:		
Appropriated 1929	1,845.00	\$ 3,600.00
Disbursed	1,755.00	
Balance September 30, 1930		\$ 3,600.00
RECLAMATION OF ARID LANDS CONTINGENT:		
Balance September 30, 1928		\$ 2,176.09
Appropriated 1929	2,899.39	2,500.00
Disbursed	1,776.70	
Balance September 30, 1930		\$ 4,676.09
RECONSTRUCTION AND EQUIPMENT VAULT STATE AUDITOR'S CONTINGENT:		
Balance September 30, 1928		\$ 388.71
Disbursed	388.71	
Balance September 30, 1930		\$ 388.71
REDEMPTION OF CANCELLED STATE WARRANTS:		
Balance September 30, 1928		\$ 39.25
Disbursed	757.72	
Balance September 30, 1930		\$ 797.00

REGIMENTAL COMMANDER TRAVELING EXPENSE:		
Appropriated 1929	478.90	\$ 1,000.00
Disbursed	526.10	
Balance September 30, 1930		\$ 1,000.00
RELIEFS 19TH LEGISLATURE:		
Balance September 30, 1928		\$ 276.45
Disbursed	258.45	
Balance September 30, 1930		\$ 276.45
RELIEFS 20TH LEGISLATURE:		
Appropriated 1929	3,468.75	\$ 3,589.25
Disbursed	120.50	
Balance September 30, 1930		\$ 3,589.25
RELIEF OF SHOSHONE IRRIGATION DISTRICT CONTINGENT:		
Appropriated 1929	493.42	\$ 900.00
Disbursed	406.58	
Balance September 30, 1930		\$ 900.00
REPAIR W. N. G. ARMORY LANDER:		
Balance September 30, 1928		\$ 79.58
Disbursed	79.58	
Balance September 30, 1930		\$ 79.58
REPAIRS W. N. G. ARMORY NEWCASTLE:		
Balance September 30, 1928		\$.01
Disbursed	.01	
Balance September 30, 1930		\$.01
REPAIRS W. N. G. ARMORY RIVERTON:		
Balance September 30, 1928		\$ 87.52
Disbursed	87.52	
Balance September 30, 1930		\$ 87.52
REPORTER SUPREME COURT DECISIONS SALARY:		
Balance September 30, 1928		\$ 1,125.00
Appropriated 1929	2,875.00	3,000.00
Disbursed	1,250.00	
Balance September 30, 1930		\$ 4,125.00
REPORTER SUPREME COURT DECISIONS CONTINGENT:		
Balance September 30, 1928		\$ 350.00
Appropriated 1929	960.85	1,050.00
Disbursed	439.65	
Balance September 30, 1930		\$ 1,400.00
REVISION OF STATUTES COMMISSION CONTINGENT:		
Appropriated 1929	462.07	\$ 15,000.00
Disbursed	14,537.93	
Balance September 30, 1930		\$ 15,000.00
ROAD CONSTRUCTION WYOMING SOLDIERS AND SAILORS HOME CONTINGENT:		
Appropriated 1929	1,000.00	\$ 1,000.00
Disbursed		
Balance September 30, 1930		\$ 1,000.00

REPORT OF STATE TREASURER

RODENT CONTROL FEDERAL DEPARTMENT CONTINGENT:
 Balance September 30, 1928 \$ 2,858.83
 Appropriated 1929 \$ 2,858.83
 Disbursed \$ 2,858.83
 Balance September 30, 1930 \$ 2,858.83

RODENT CONTROL CONTINGENT:
 Balance September 30, 1928 \$ 2,092.19
 Appropriated 1929 \$ 15,000.00
 Disbursed 12,170.40
 Balance September 30, 1930 \$ 4,921.79

RURAL SCHOOLS SUPERVISION CONTINGENT:
 Balance September 30, 1928 \$ 4,665.17
 Appropriated 1929 \$ 12,000.00
 Disbursed 11,328.14
 Balance September 30, 1930 \$ 5,337.03

SARATOGA HOT SPRINGS IMPROVEMENTS CONTINGENT:
 Appropriated 1929 \$ 24,084.88
 Disbursed 916.82
 Balance September 30, 1930 \$ 25,000.00

SECRETARY BOARD OF CONTROL SALARY:
 Balance September 30, 1928 \$ 1,575.00
 Appropriated 1929 \$ 4,200.00
 Disbursed 4,025.00
 Balance September 30, 1930 \$ 1,750.00

SECRETARY BOARD OF CONTROL CONTINGENT:
 Balance September 30, 1928 \$ 3,064.75
 Appropriated 1929 \$ 4,000.00
 Disbursed 3,591.86
 Balance September 30, 1930 \$ 3,473.89

SECRETARY BOARD OF EQUALIZATION SALARY:
 Balance September 30, 1928 \$ 1,533.83
 Appropriated 1929 \$ 4,800.00
 Disbursed 4,633.33
 Balance September 30, 1930 \$ 2,000.00

SECRETARY BOARD OF HEALTH SALARY:
 Balance September 30, 1928 \$ 3,333.32
 Appropriated 1929 \$ 8,000.00
 Disbursed 7,999.98
 Balance September 30, 1930 \$ 3,333.34

SECRETARY BOARD OF SHEEP COMMISSIONERS SALARY:
 Balance September 30, 1928 \$ 1,800.00
 Appropriated 1929 \$ 4,800.00
 Disbursed 4,600.00
 Balance September 30, 1930 \$ 2,000.00

SECRETARY TO GOVERNOR SALARY:
 Balance September 30, 1928 \$ 2,025.00
 Appropriated 1929 \$ 6,000.00
 Disbursed 5,555.36
 Balance September 30, 1930 \$ 2,500.00

REPORT OF STATE TREASURER

SECRETARY OF STATE SALARY:
 Balance September 30, 1928 \$ 3,000.00
 Appropriated 1929 \$ 8,000.00
 Disbursed 7,666.64
 Balance September 30, 1930 \$ 3,333.36

SECRETARY OF STATE CONTINGENT:
 Balance September 30, 1928 \$ 30,214.95
 Appropriated 1929 \$ 67,522.65
 Disbursed 60,902.23
 Balance September 30, 1930 \$ 36,835.37

MELVIN SIMONSON CONTINGENT:
 Appropriated 1929 \$ 600.00
 Disbursed 900.00
 Balance September 30, 1930 \$ 1,500.00

SLAUGHTERED LIVE STOCK:
 Balance September 30, 1928 \$ 3,616.22
 Appropriated 1929 \$ 4,000.00
 Disbursed 4,050.40
 Balance September 30, 1930 \$ 3,565.82

SOLDIERS AND SAILORS HOME CONTINGENT:
 Appropriated 1929 \$ 21,150.00
 Disbursed 11.00
 Balance September 30, 1930 \$ 21,200.00

SOLDIERS TAX EXEMPTION CONTINGENT 1928:
 Appropriated 1929 \$ 92,746.17
 Disbursed \$ 92,746.17
 Balance September 30, 1930 \$ 92,746.17

SOLDIERS TAX EXEMPTION 1929 CONTINGENT:
 Appropriated 1929 \$ 93,880.32
 Disbursed \$ 93,880.32
 Balance September 30, 1930 \$ 93,880.32

SPECIAL EDUCATION CONTINGENT:
 Balance September 30, 1928 \$ 10,977.99
 Appropriated 1929 \$ 25,000.00
 Disbursed 24,499.84
 Balance September 30, 1930 \$ 11,478.15

SPECIAL HIGHWAY INVESTIGATION CONTINGENT:
 Appropriated 1929 \$ 5,542.68
 Disbursed 4,467.82
 Balance September 30, 1930 \$ 10,000.00

STATIONERY, POSTAGE AND SUPPLIES 19TH LEGISLATURE:
 Balance September 30, 1928 \$ 1,584.23
 Disbursed \$ 1,584.23
 Balance September 30, 1930 \$ 1,584.23

STATIONERY, POSTAGE AND SUPPLIES 20TH LEGISLATURE:
 Appropriated 1929 \$ 5,000.00
 Disbursed 4,378.88
 Balance September 30, 1930 \$ 621.12

REPORT OF STATE TREASURER

STATIONERY, POSTAGE AND SUPPLIES SPECIAL SESSION 20TH LEGISLATURE:		
Appropriated 1929	\$ 111.56	\$ 150.00
Disbursed	38.44	
Balance September 30, 1930	\$ 150.00	\$ 150.00
STREAM MEASUREMENTS:		
Balance September 30, 1928		\$ 3,990.84
Appropriated 1929		11,500.00
Disbursed	9,878.58	
Balance September 30, 1930	\$ 5,612.26	\$ 15,490.84
SUPERINTENDENT PUBLIC INSTRUCTION SALARY:		
Balance September 30, 1928		\$ 3,000.00
Appropriated 1929	7,686.63	8,000.00
Disbursed	3,233.37	
Balance September 30, 1930	\$ 11,000.00	\$ 11,000.00
SUPERINTENDENT PUBLIC INSTRUCTION CONTINGENT:		
Balance September 30, 1928		\$ 4,610.74
Appropriated 1929	17,655.37	23,016.00
Disbursed	9,971.37	
Balance September 30, 1930	\$ 27,626.74	\$ 27,626.74
SUPERINTENDENTS WATER DIVISIONS SALARIES:		
Balance September 30, 1928		\$ 7,500.00
Appropriated 1929	18,700.00	19,200.00
Disbursed	8,000.00	
Balance September 30, 1930	\$ 26,700.00	\$ 26,700.00
SUPERINTENDENTS WATER DIVISIONS CONTINGENT:		
Balance September 30, 1928		\$ 4,693.66
Appropriated 1929	10,386.56	9,880.00
Disbursed	4,137.10	
Balance September 30, 1930	\$ 14,523.66	\$ 14,523.66
SUPERVISOR MINERAL PRODUCTIONS SALARY:		
Appropriated 1929	\$ 3,500.00	\$ 6,000.00
Disbursed	2,500.00	
Balance September 30, 1930	\$ 6,000.00	\$ 6,000.00
SUPERVISOR MINERAL PRODUCTIONS CONTINGENT:		
Appropriated 1929	2,322.36	\$ 3,000.00
Disbursed	667.64	
Balance September 30, 1930	\$ 3,000.00	\$ 3,000.00
SUPREME COURT CONTINGENT:		
Balance September 30, 1928		\$ 5,907.11
Appropriated 1929	13,533.50	14,530.00
Disbursed	6,908.61	
Balance September 30, 1930	\$ 20,437.11	\$ 20,437.11
SQUADRON COMMANDER TRAVELING EXPENSE:		
Appropriated 1929	285.85	\$ 1,000.00
Disbursed	714.15	
Balance September 30, 1930	\$ 1,000.00	\$ 1,000.00

REPORT OF STATE TREASURER

TAXES, IRRIGATION AND DRAINAGE CONTINGENT:		
Balance September 30, 1928		\$ 4,527.04
Appropriated 1929	6,310.44	4,500.00
Disbursed	2,716.60	
Balance September 30, 1930	\$ 9,027.04	\$ 9,027.04
TRAINING SCHOOL MAINTENANCE CONTINGENT:		
Balance September 30, 1928		\$ 27,987.80
Appropriated 1929	108,343.96	133,000.00
Disbursed	82,663.84	
Balance September 30, 1930	\$ 150,997.80	\$ 150,997.80
TRAINING SCHOOL INFIRMARY AND COTTAGE CONTINGENT:		
Balance September 30, 1928		\$ 83.56
Disbursed	83.56	
Balance September 30, 1930	\$ 83.56	\$ 83.56
TRAINING SCHOOL DORMITORY AND FURNISHINGS CONTINGENT:		
Balance September 30, 1928		\$ 50,000.00
Appropriated 1929	50,000.00	50,000.00
Disbursed		
Balance September 30, 1930	\$ 50,000.00	\$ 50,000.00
TRAINING SCHOOL GENERAL IMPROVEMENTS CONTINGENT:		
Balance September 30, 1928		\$ 13,000.00
Appropriated 1929	10,055.92	13,000.00
Disbursed	2,944.08	
Balance September 30, 1930	\$ 13,000.00	\$ 13,000.00
TRANSPORTATION AND EXCHANGE GAME ANIMALS CONTINGENT:		
Balance September 30, 1928		\$ 1,450.00
Disbursed	1,450.00	
Balance September 30, 1930	\$ 1,450.00	\$ 1,450.00
TREASURER'S SALARY:		
Balance September 30, 1928		\$ 2,999.96
Appropriated 1929	7,668.62	8,000.00
Disbursed	3,333.34	
Balance September 30, 1930	\$ 10,999.96	\$ 10,999.96
TREASURER'S CONTINGENT:		
Balance September 30, 1928		\$ 8,931.25
Appropriated 1929	21,945.44	23,842.96
Disbursed	10,328.77	
Balance September 30, 1930	\$ 32,274.21	\$ 32,274.21
TREASURER'S BURGLARY INSURANCE CONTINGENT:		
Balance September 30, 1928		\$ 78.96
Disbursed	78.96	
Balance September 30, 1930	\$ 78.96	\$ 78.96
TUBERCULOSIS SANATORIUM CONTINGENT:		
Balance September 30, 1928		\$ 6,121.62
Appropriated 1929	44,006.23	76,100.00
Disbursed	37,218.39	
Balance September 30, 1930	\$ 51,221.62	\$ 51,221.62

TUBERCULOSIS SANATORIUM FENCING, GRADING, ETC., CONTINGENT:			
Appropriated 1929	\$ 425.62	\$ 500.00	\$ 500.00
Disbursed	74.85		
Balance September 30, 1930		\$ 500.00	\$ 500.00
TUBERCULOSIS SANATORIUM IRRIGATION CONTINGENT:			
Appropriated 1929	\$ 200.00	\$ 200.00	\$ 200.00
Balance September 30, 1930		\$ 200.00	\$ 200.00
TUBERCULOSIS SANATORIUM NURSES HOME AND FURNISHINGS:			
Appropriated 1929	\$ 10,000.00	\$ 10,000.00	\$ 10,000.00
Balance September 30, 1930		\$ 10,000.00	\$ 10,000.00
TUBERCULOSIS SANATORIUM SUPERINTENDENT RESIDENCE AND FURNISHINGS:			
Appropriated 1929	\$ 468.03	\$ 10,000.00	\$ 10,000.00
Disbursed	9,531.97		
Balance September 30, 1930		\$ 10,000.00	\$ 10,000.00
TUBERCULOSIS SANATORIUM SEWER CONTINGENT:			
Appropriated 1929	\$ 7,314.99	\$ 10,000.00	\$ 10,000.00
Disbursed	2,685.01		
Balance September 30, 1930		\$ 10,000.00	\$ 10,000.00
TUBERCULOSIS SANATORIUM WEATHER STRIPPING CONTINGENT:			
Appropriated 1929	\$ 789.00	\$ 750.00	\$ 750.00
Disbursed	11.00		
Balance September 30, 1930		\$ 750.00	\$ 750.00
UNIFORM STATE LAWS CONFERENCE:			
Appropriated 1929	\$ 200.00	\$ 200.00	\$ 200.00
Disbursed			
Balance September 30, 1930		\$ 200.00	\$ 200.00
UNIVERSITY OF WYOMING CONTINGENT:			
Balance September 30, 1928	\$ 62,500.00	\$ 62,500.00	\$ 62,500.00
Appropriated 1929	152,508.78	150,000.00	150,000.00
Disbursed	59,996.22		
Balance September 30, 1930		\$ 212,500.00	\$ 212,500.00
UNIVERSITY OF WYOMING EXTENSION CONTINGENT:			
Balance September 30, 1928	\$ 57,543.81	\$ 57,543.81	\$ 57,543.81
Appropriated 1929	121,208.56	140,000.00	140,000.00
Disbursed	76,387.25		
Balance September 30, 1930		\$ 197,543.81	\$ 197,543.81
UNIVERSITY INSTRUCTION OIL ENGINEERING AND RESEARCH:			
Appropriated 1929	\$ 11,517.26	\$ 20,000.00	\$ 20,000.00
Disbursed	8,482.74		
Balance September 30, 1930		\$ 20,000.00	\$ 20,000.00

VETERINARIAN'S SALARY:			
Balance September 30, 1928	\$ 2,250.00	\$ 2,250.00	\$ 2,250.00
Appropriated 1929	5,750.00	6,000.00	6,000.00
Disbursed	2,500.00		
Balance September 30, 1930		\$ 8,250.00	\$ 8,250.00
VETERINARIAN'S CONTINGENT:			
Balance September 30, 1928	\$ 8,323.07	\$ 8,323.07	\$ 8,323.07
Appropriated 1929	19,865.64	20,665.00	20,665.00
Disbursed	9,622.43		
Balance September 30, 1930		\$ 28,988.07	\$ 28,988.07
VITAL STATISTICS CONTINGENT:			
Appropriated 1929	\$ 1,659.75	\$ 3,500.00	\$ 3,500.00
Disbursed	1,811.25		
Balance September 30, 1930		\$ 3,500.00	\$ 3,500.00
VOCATIONAL EDUCATION CONTINGENT:			
Balance September 30, 1928	\$ 15,471.07	\$ 15,471.07	\$ 15,471.07
Appropriated 1929	39,895.27	50,000.00	50,000.00
Disbursed	25,575.80		
Balance September 30, 1930		\$ 65,471.07	\$ 65,471.07
WESTERN WYOMING POULTRY SHOWS LYMAN CONTINGENT:			
Balance September 30, 1928	\$ 261.45	\$ 261.45	\$ 261.45
Disbursed			
Balance September 30, 1930		\$ 261.45	\$ 261.45
WATER SYSTEM IMPROVEMENT GIRLS' INDUSTRIAL INSTITUTE:			
Appropriated 1929	\$ 11,000.00	\$ 11,000.00	\$ 11,000.00
Disbursed			
Balance September 30, 1930		\$ 11,000.00	\$ 11,000.00
WORLAND AGRICULTURAL SHOWS CONTINGENT:			
Balance September 30, 1928	\$ 1,000.00	\$ 1,000.00	\$ 1,000.00
Disbursed			
Balance September 30, 1930		\$ 1,000.00	\$ 1,000.00
WYOMING STATE FAIR CONTINGENT:			
Balance September 30, 1928	\$ 18,043.50	\$ 18,043.50	\$ 18,043.50
Appropriated 1929	41,118.86	40,623.66	40,623.66
Disbursed	12,546.29		
Balance September 30, 1930		\$ 53,667.15	\$ 53,667.15
WYOMING STATE FAIR IMPROVEMENT CONTINGENT:			
Balance September 30, 1928	\$ 372.15	\$ 372.15	\$ 372.15
Disbursed			
Balance September 30, 1930		\$ 372.15	\$ 372.15
WYOMING GENERAL HOSPITAL IMPROVEMENT AND CONSTRUCTION CONTINGENT:			
Appropriated 1929	\$ 2,899.07	\$ 10,000.00	\$ 10,000.00
Disbursed	7,110.93		
Balance September 30, 1930		\$ 10,000.00	\$ 10,000.00
WYOMING GENERAL HOSPITAL IMPROVEMENT CONTINGENT:			
Balance September 30, 1928	\$ 18,974.41	\$ 18,974.41	\$ 18,974.41
Disbursed			
Balance September 30, 1930		\$ 18,974.41	\$ 18,974.41

REPORT OF STATE TREASURER

WYOMING STATE HOSPITAL CONTINGENT:		
Balance September 30, 1928	\$	74,202.57
Appropriated 1929		200,000.00
Disbursed		214,498.66
Balance September 30, 1930	\$	59,703.91
	\$	274,202.57
	\$	274,202.57
WYOMING STATE HOSPITAL BRICK OVEN AND BAKERY CONTINGENT:		
Appropriated 1929	\$	5,000.00
Balance September 30, 1930	\$	5,000.00
	\$	5,000.00
WYOMING STATE HOSPITAL GENERAL IMPROVEMENT CONTINGENT:		
Appropriated 1929	\$	4,771.75
Disbursed		228.22
Balance September 30, 1930	\$	5,000.00
	\$	5,000.00
WYOMING STATE HOSPITAL NEW LAUNDRY CONTINGENT:		
Balance September 30, 1928	\$	88.40
Disbursed		88.40
	\$	88.40
WYOMING STATE HOSPITAL LIGHT AND POWER LINES CONTINGENT:		
Balance September 30, 1928	\$	2,646.00
Disbursed		2,646.00
	\$	2,646.00
WYOMING STATE HOSPITAL LIVE STOCK PURCHASE CONTINGENT:		
Balance September 30, 1928	\$	97.85
Disbursed		97.85
	\$	97.85
WYOMING STATE HOSPITAL ROOT CELLAR CONTINGENT:		
Balance September 30, 1928	\$	469.31
Disbursed		469.31
	\$	469.31
WYOMING STATE HOSPITAL X-RAY MACHINE CONTINGENT:		
Appropriated 1929	\$	2,600.00
Disbursed		2,600.00
	\$	2,600.00
WYOMING STATE HOSPITAL WARD "E" ADDITION:		
Appropriated 1929	\$	17,000.00
Disbursed		17,000.00
	\$	17,000.00
WYOMING STATE HOSPITAL WARD 5 ADDITION IMPROVEMENT:		
Appropriated 1929	\$	7,594.07
Disbursed		405.93
Balance September 30, 1930	\$	8,000.00
	\$	8,000.00
WYOMING STATE HOSPITAL SEWER CONTINGENT:		
Appropriated 1929	\$	6,900.00
Disbursed		6,900.00
	\$	6,900.00

REPORT OF STATE TREASURER

WYOMING INDUSTRIAL INSTITUTE CONTINGENT:		
Balance September 30, 1928	\$	19,260.53
Appropriated 1929		45,000.00
Disbursed		64,260.53
	\$	64,260.53
WYOMING INDUSTRIAL INSTITUTE DRAINAGE CONTINGENT:		
Balance September 30, 1928	\$	5,000.00
Disbursed		5,000.00
	\$	5,000.00
WYOMING PEACE OFFICERS' PREMIUM CONTINGENT:		
Appropriated 1929	\$	8,363.29
Disbursed		8,363.29
	\$	8,363.29

REPORT OF THE STATE BOARD OF DEPOSITS

The State Board of Deposits, consisting of the Governor, Secretary of State and the State Treasurer, has held frequent meetings during the last two years, and has considered the applications of a considerable number of Banks to be designated as State Depositories under the provisions of the State Depository Law. The Banks so designated by the Board are as follows:

Star Valley State Bank	Afton	Wyoming
Arvada State Bank	Arvada	Wyoming
State Bank of Big Piney	Big Piney	Wyoming
First National Bank	Buffalo	Wyoming
Farmers State Bank	Burns	Wyoming
Burlington State Bank	Burlington	Wyoming
Wyoming National Bank	Casper	Wyoming
Casper National Bank	Casper	Wyoming
First Trust & Savings Bank	Casper	Wyoming
Wyoming Trust Company	Casper	Wyoming
American National Bank	Cheyenne	Wyoming
Stock Growers National Bank	Cheyenne	Wyoming
First National Bank	Cody	Wyoming
Shoshone National Bank	Cody	Wyoming
Chugwater Valley Bank	Chugwater	Wyoming
State Bank of Cokeville	Cokeville	Wyoming
Bank of Deaver	Deaver	Wyoming
Converse County Bank	Deaver	Wyoming
First State Bank	Douglas	Wyoming
Douglas National Bank	Douglas	Wyoming
The First National Bank	Douglas	Wyoming
The Evanston National Bank	Evanston	Wyoming
The Stockgrowers Bank	Evanston	Wyoming
The Stockmen's Bank	Gillette	Wyoming
Glenrock State Bank	Glenrock	Wyoming
State Bank of Green River	Green River	Wyoming
First National Bank	Greybull	Wyoming
Bank of Hudson	Hudson	Wyoming
First National Bank	Green River	Wyoming
Hanna State & Savings Bank	Hanna	Wyoming
Farmers State Bank	Jay Em.	Wyoming
Kemmerer Savings Bank	Kemmerer	Wyoming
First National Bank	Kemmerer	Wyoming

First State Bank	Laramie	Wyoming
The Albany National Bank	Laramie	Wyoming
The First National Bank	Laramie	Wyoming
First National Bank	Lander	Wyoming
Lander State Bank	Lander	Wyoming
Stockgrowers State Bank	Lander	Wyoming
State Bank of Lovell	Lovell	Wyoming
The First National Bank	Lovell	Wyoming
Lusk State Bank	Lusk	Wyoming
Medicine Bow State Bank	Medicine Bow	Wyoming
The First National Bank	Meeteetse	Wyoming
Uinta County State Bank	Mountain View	Wyoming
First State Bank	Newcastle	Wyoming
Parco State Bank	Parco	Wyoming
The Farmers State Bank	Pine Bluffs	Wyoming
State Bank of Pinedale	Pinedale	Wyoming
First National Bank	Powell	Wyoming
Park County Bank	Powell	Wyoming
First National Bank	Rawlins	Wyoming
Rawlins National Bank	Rawlins	Wyoming
Riverton State Bank	Riverton	Wyoming
Rock Springs National Bank	Rock Springs	Wyoming
First Security Bank	Rock Springs	Wyoming
North Side State Bank	Rock Springs	Wyoming
Saratoga State Bank	Saratoga	Wyoming
First National Bank	Sheridan	Wyoming
Bank of Commerce	Sheridan	Wyoming
Sheridan Trust & Savings Bank	Sheridan	Wyoming
Sundance State Bank	Sundance	Wyoming
First Bank of Superior	Superior	Wyoming
First Security Bank	So. Superior	Wyoming
First National Bank	Thermopolis	Wyoming
Wyoming Trust Company	Thermopolis	Wyoming
The Citizens National Bank	Torrington	Wyoming
Goshen County Bank	Torrington	Wyoming
State Bank of Wheatland	Wheatland	Wyoming
Stock Growers Bank	Wheatland	Wyoming
Stock Growers State Bank	Worland	Wyoming
Farmers State Bank	Worland	Wyoming
Security State Bank	Yoder	Wyoming

The State Board of Deposits has also from time to time, approved the bonds and securities offered by Banks for protection of State Deposits, said bonds and securities having in all cases been found to be in prescribed form, and the security being deemed sufficient in each case.

The rate of interest fixed by the Board of Deposits to be paid by State Depositories upon deposits of State Funds is two per centum upon daily balances.

W. H. EDELMAN,
Secretary.